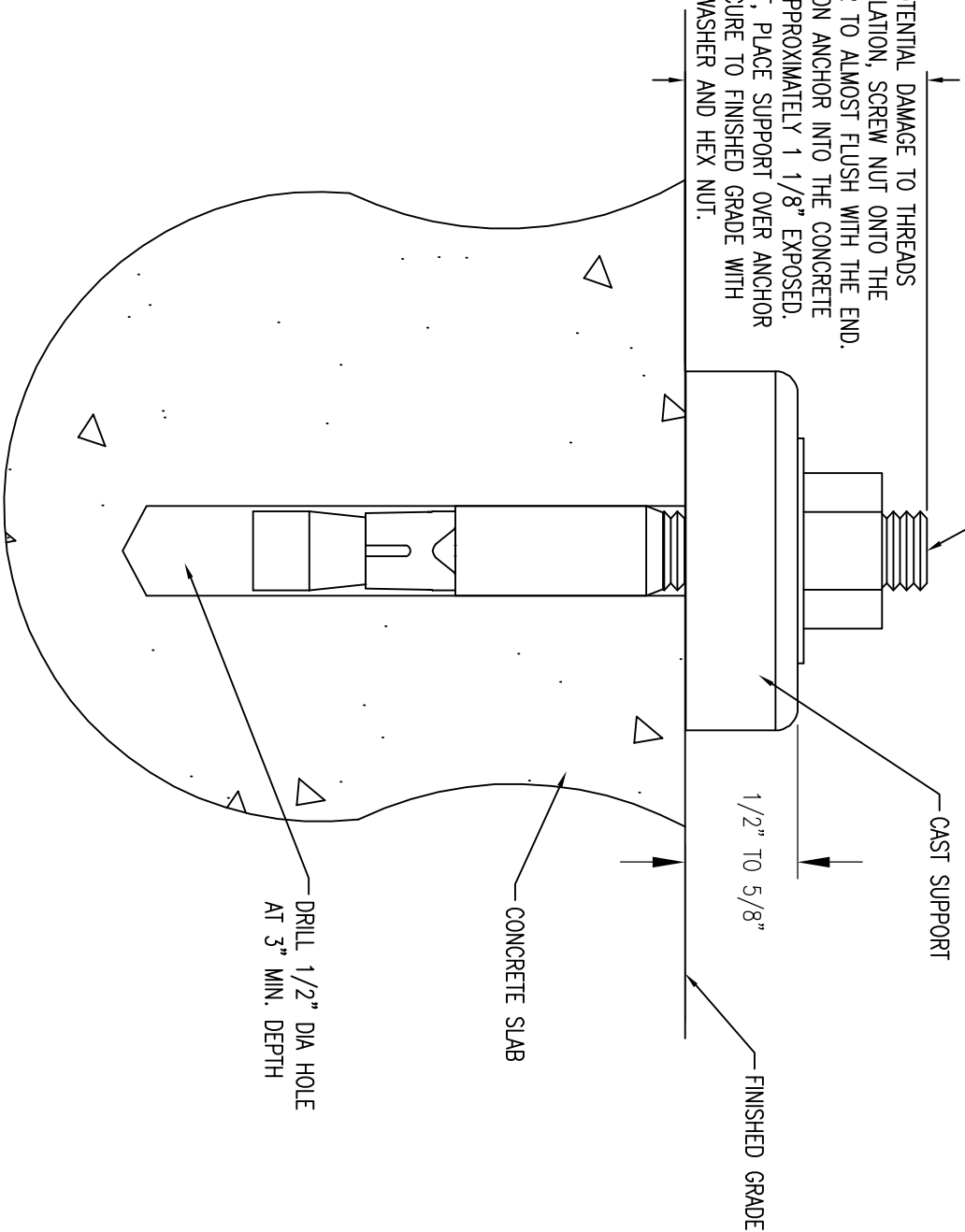


1/2" X 3 3/4" EXPANSION ANCHOR  
BOLT WITH FLAT WASHER AND HEX NUT

TO AVOID POTENTIAL DAMAGE TO THREADS  
DURING INSTALLATION, SCREW NUT ONTO THE  
EXPANSION ANCHOR TO ALMOST FLUSH WITH THE END.  
INSERT EXPANSION ANCHOR INTO THE CONCRETE  
HOLE LEAVING APPROXIMATELY 1 1/8" EXPOSED.  
REMOVE HEX NUT, PLACE SUPPORT OVER ANCHOR  
BOLT AND SECURE TO FINISHED GRADE WITH  
FLAT WASHER AND HEX NUT.



DATE DRAWN : 5/11/01	TITLE	EXPANSION ANCHOR DEVICE
DRAWN BY : HD	W/ CAST SUPPORT	
DATE REV. :	REVISION	A
REV. BY :	DRAWING NUMBER	EXPANSION ANCHOR