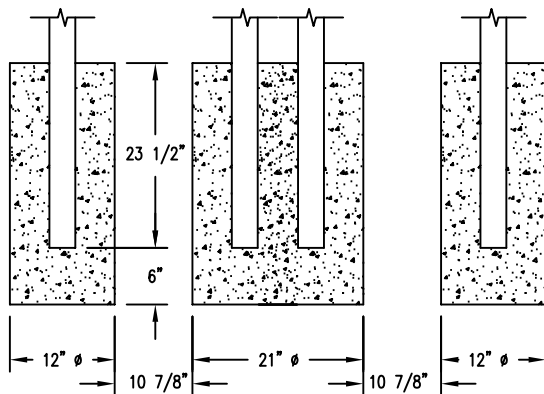
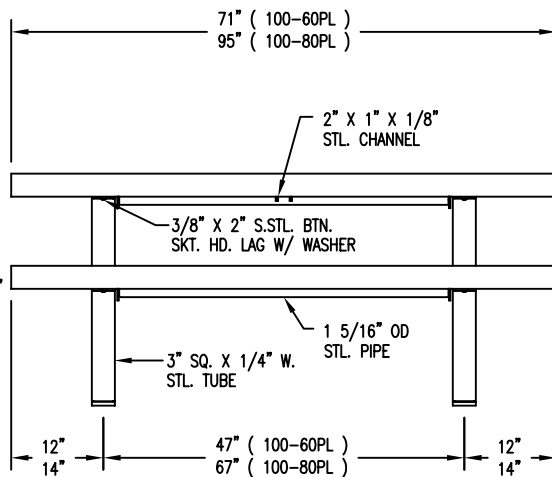
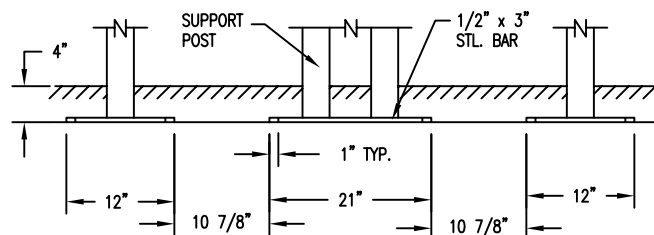
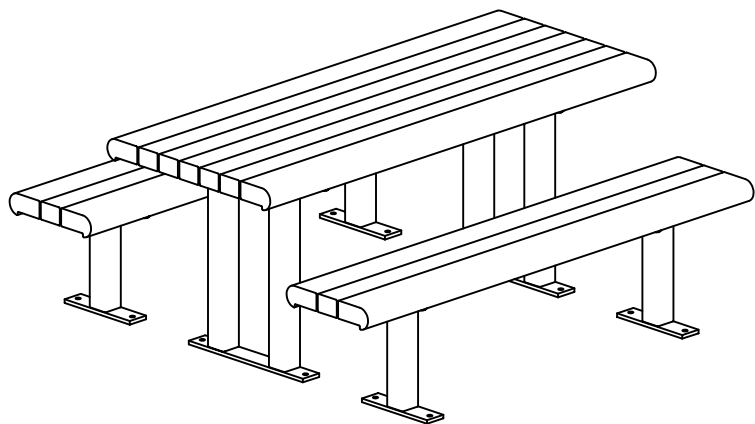


S-2 SURFACE MOUNT



S-1 EMBEDMENT



S-4 SUB FLOOR

LENGTH OPTIONS

- 6' TABLE
- 8' TABLE

SLAT OPTIONS

- "CEDAR" RECYCLED PLASTIC
- "GREEN" RECYCLED PLASTIC
- "GREY" RECYCLED PLASTIC
- "REDWOOD" RECYCLED PLASTIC
- "WALNUT" RECYCLED PLASTIC
- OTHER \_\_\_\_\_

NOTES:

- 1.) ALL STL. MEMBERS COATED W/ ZINC RICH EPOXY THEN FINISHED W/ POLYESTER POWDER COATING.
- 2.) 1/2" X 3 3/4" EXPANSION ANCHOR BOLTS PROVIDED. FOR OPTIONS S-2 & S-4.

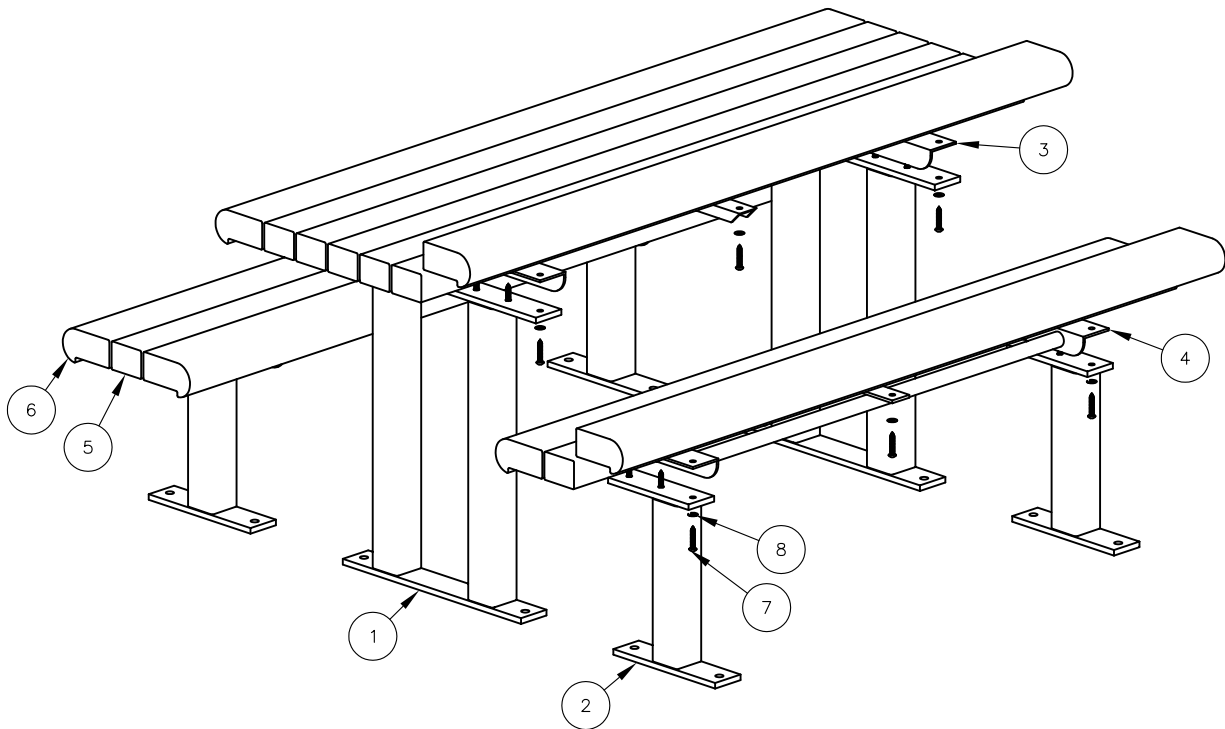
**DuMor, inc.**  
 P.O. Box 142 Mifflintown, PA 17059-0142

SCALE : NONE  
 DATE DRAWN : 10/10/95  
 DRAWN BY : AH  
 DATE REV. : 12/03/09  
 REV. BY : ESS

TITLE : PICNIC TABLE

REV. D DRAWING NUMBER 100 SERIES PL

SHEET 1 OF 2



**NOTES:**

- 1.) DURING ASSEMBLY PROCEDURE;  
DO NOT COMPLETELY TIGHTEN HARDWARE.
- 2.) THE ACTUAL PARTS WILL NOT BE NUMBERED;  
NUMBERS ONLY APPLY TO DRAWING.
- 3.) SEE SPEC. SHEET 1 FOR MOUNTING DETAILS.

**STEP 1:**

USE 1 - PC. 6' TABLE TOP BRACE ( 3 )  
 5 - PCS. 3" X 4" X 71" PLASTIC INT'R SLAT ( 5 )  
 2 - PCS. 71" PLASTIC PROFILED EDGE SLAT ( 6 )  
 7 - PCS. 3/8" X 2" SS. BTN. SKT. HD. LAG SCR. ( 7 )  
 7 - PCS. 3/8" SS. FLAT WASHER ( 8 )  
 ATTACH 3" X 4" X 71" PLASTIC INT'R SLAT ( 5 ) AND 71"  
 PLASTIC PROFILED EDGE SLAT ( 6 ) TO 6' TABLE TOP BRACE ( 3 )  
 USING HARDWARE ( 7 & 8 ), IN CENTER CHANNEL ONLY. TIGHTEN  
 TO SNUG FIT. REPEAT UNTIL ALL SLATS ARE ATTACHED.

**STEP 2:**

USE 2 - PCS. TABLE TOP SUPPORT FOR SURFACE MOUNT ( 1 )  
 14 - PCS. 3/8" X 2" SS. BTN. SKT. HD. LAG SCR. ( 7 )  
 14 - PCS. 3/8" SS. FLAT WASHER ( 8 )  
 ATTACH SUPPORT FOR SURFACE MOUNT  
 ( 1 ) TO STEP 1 ASSEMBLY USING HARDWARE  
 ( 7 & 8 ). TIGHTEN TO SNUG FIT.

**STEP 3:**

USE 2 - PC. 6' SEAT BRACE ( 4 )  
 2 - PCS. 3" X 4" X 71" PLASTIC INT'R SLAT ( 5 )  
 4 - PCS. 71" PLASTIC PROFILED EDGE SLAT ( 6 )  
 6 - PCS. 3/8" X 2" SS. BTN. SKT. HD. LAG SCR. ( 7 )  
 6 - PCS. 3/8" SS. FLAT WASHER ( 8 )  
 ATTACH 3" X 4" X 71" PLASTIC INT'R SLAT ( 5 ) AND 71"  
 PLASTIC PROFILED EDGE SLAT ( 6 ) TO 6' SEAT BRACE ( 4 )  
 USING HARDWARE ( 7 & 8 ), IN CENTER PLATE ONLY.  
 TIGHTEN TO SNUG FIT.

**STEP 4:**

USE 4 - PCS. SEAT SUPPORT FOR SURFACE MOUNT ( 2 )  
 12 - PCS. 3/8" X 2" SS. BTN. SKT. HD. LAG SCR. ( 7 )  
 12 - PCS. 3/8" SS. FLAT WASHER ( 8 )  
 ATTACH SEAT SUPPORT FOR SURFACE MOUNT ( 2 ) TO STEP 3  
 ASSEMBLY USING HARDWARE ( 7 & 8 ). TIGHTEN TO SNUG FIT.

**STEP 5:**

UPON COMPLETION OF TABLE ASSEMBLY SQUARE  
 ALL COMPONENTS THEN TIGHTEN ALL HARDWARE.

**STEP 6:**

ANCHOR ACCORDING TO SUPPORT OPTION USED.

ITEM	QTY	PART NO	DESCRIPTION
1	2	0-100-00-01/S-2	TABLE TOP SUPPORT FOR SURFACE
2	4	0-100-00-02/S-2	SEAT SUPPORT FOR SURFACE MT
3	1	0-100-60-05	6' TABLE TOP BRACE
4	2	0-100-60-06	6' SEAT BRACE
5	7	0-88-60PL-02	3" X 4" X 71" PLASTIC INT'R SLAT
6	6	0-88-60PL-03	71" PLASTIC EDGE SLAT
7	39	1-13-016	3/8" X 2" SS BTN SKT HD LAG SCR
8	39	1-22-024	3/8" SS FLAT WASHER

**DuMor, inc.**  
 P.O. Box 142 Mifflintown, PA 17059-0142

SCALE : NONE  
 DATE DRAWN : 10/10/95  
 DRAWN BY : AH  
 DATE REV. : 12/03/09  
 REV. BY : ESS

TITLE : PICNIC TABLE ASSEMBLY

REV. D	DRAWING NUMBER 100 SERIES PL	SHEET 2 OF 2
--------	------------------------------	--------------