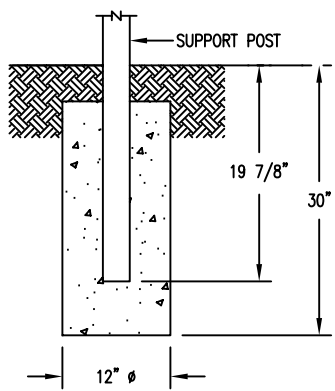
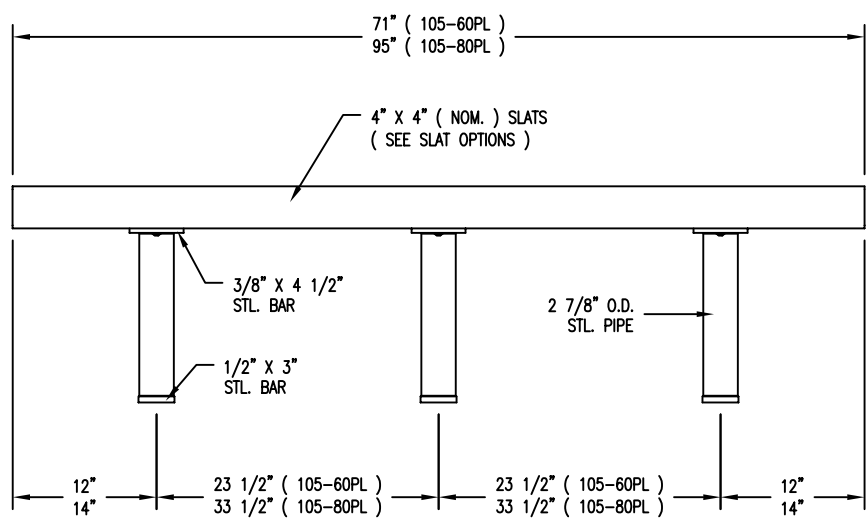
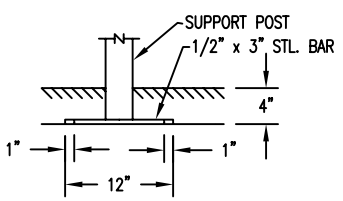


3/8" X 2" S.STL
BTN. SKT. HD.
LAG W/ WASHER

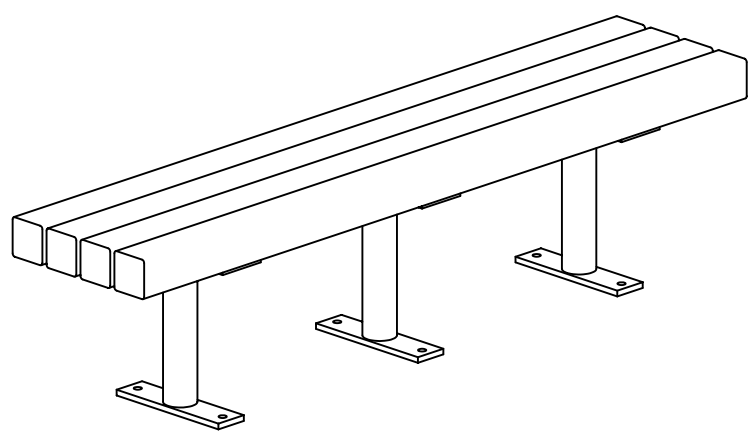
S-2 SURFACE



S-1 EMBEDMENT



S-4 SUB FLOOR



LENGTH OPTIONS

- 6' BENCH
- 8' BENCH

SLAT OPTIONS

- "CEDAR" RECYCLED PLASTIC
- "GREEN" RECYCLED PLASTIC
- "GREY" RECYCLED PLASTIC
- "REDWOOD" RECYCLED PLASTIC
- "WALNUT" RECYCLED PLASTIC
- OTHER _____

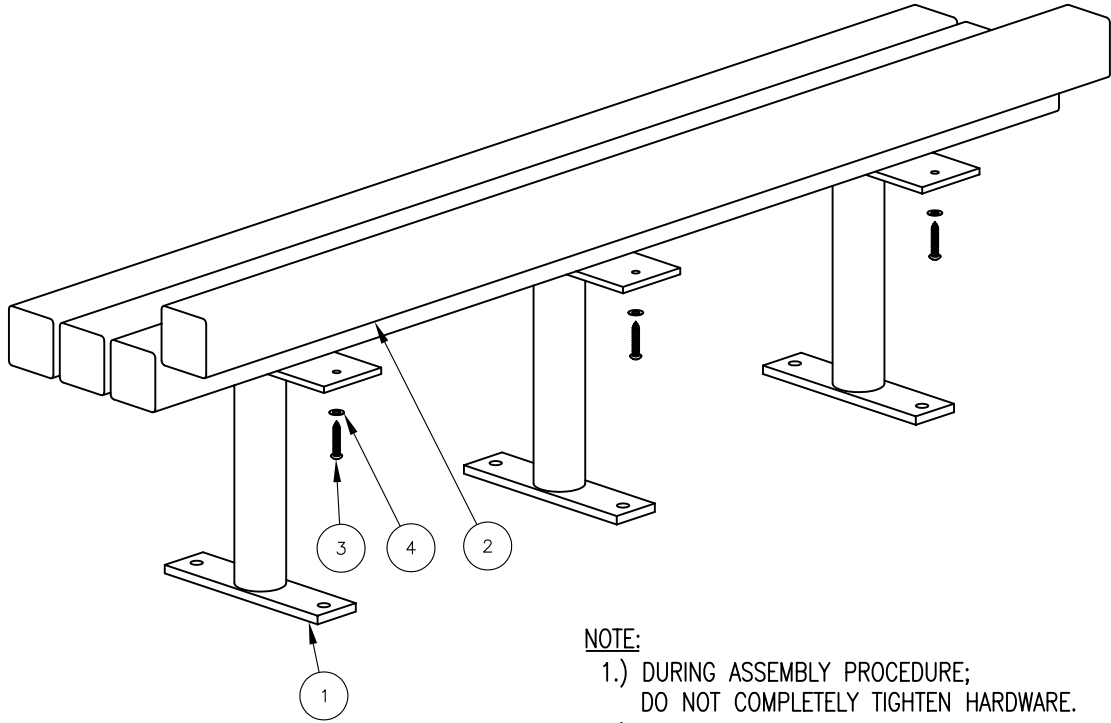
NOTES

- 1.) ALL STL. MEMBERS COATED W/ ZINC RICH EPOXY THEN FINISHED W/ POLYESTER POWDER COATING.
- 2.) 1/2" X 3 3/4" EXPANSION ANCHOR BOLTS PROVIDED FOR S-2 & S-4 OPTIONS.

DuMor, inc.
P.O. Box 142 Mifflintown, PA 17059-0142

SCALE :	NONE
DATE DRAWN :	12/12/96
DRAWN BY :	AH
DATE REV. :	12/04/09
REV. BY :	ESS

TITLE :		BENCH	
REV.	D	DRAWING NUMBER	105 SERIES PL
		SHEET	1 OF 2



NOTE:

- 1.) DURING ASSEMBLY PROCEDURE;
DO NOT COMPLETELY TIGHTEN HARDWARE.
- 2.) THE ACTUAL PARTS WILL NOT BE NUMBERED;
NUMBERS ONLY APPLY TO DRAWING
- 3.) SEE SPEC SHEET 1 FOR MOUNTING OPTION.

STEP 1:

USE 3 - PCS. SUPPORT FOR SURFACE MOUNT (1)
 4 - PCS. 4" X 4" X 71" PLASTIC SLAT (2)
 12 - PCS. 3/8" X 2" SS. BTN. SKT. HD. LAG SCR. (3)
 12 - PCS. 3/8" SS. FLAT WASHER (4)
 ATTACH 4" X 4" X 71" PLASTIC SLAT (2) TO SUPPORT FOR
 SURFACE MOUNT (1) USING HARDWARE (3 & 4). TIGHTEN TO
 SNUG FIT. REPEAT UNTIL ALL SLATS ARE ATTACHED.

STEP 2:

UPON COMPLETION OF BENCH ASSEMBLY SQUARE ALL
 COMPONENTS THEN TIGHTEN ALL HARDWARE.

STEP 3:

ANCHOR ACCORDING TO SUPPORT OPTION USED.

ITEM	QTY	PART NO	DESCRIPTION
1	3	0-105-00-01/S-2	SUPPORT FOR SURFACE MOUNT
2	4	0-11-60PL-02	4" X 4" X 71" PLASTIC SLAT
3	12	1-13-016	3/8" X 2" SS BTN SKT HD LAG SCR
4	12	1-22-024	3/8" SS FLAT WASHER



DuMor, inc.
 P.O. Box 142 Mifflintown, PA 17059-0142

SCALE : NONE
 DATE DRAWN : 12/12/96
 DRAWN BY : AH
 DATE REV. : 12/04/09
 REV. BY : ESS

TITLE : BENCH ASSEMBLY

REV. D	DRAWING NUMBER 105 SERIES PL	SHEET 2 OF 2
--------	------------------------------	--------------