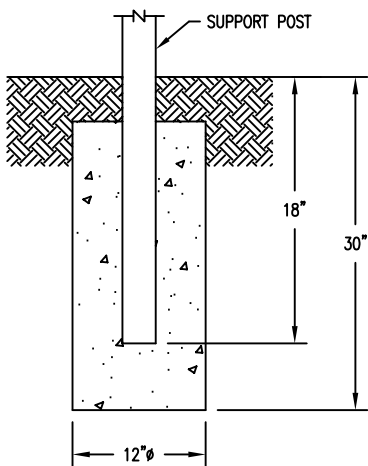
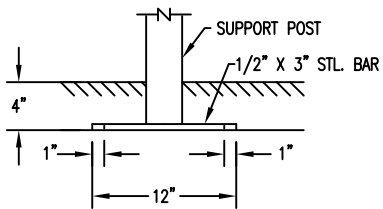


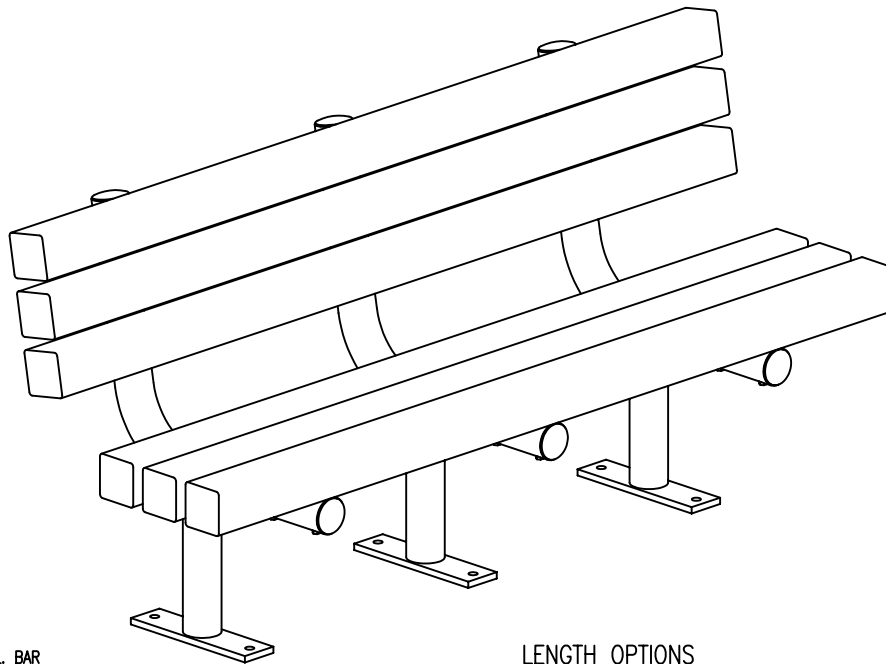
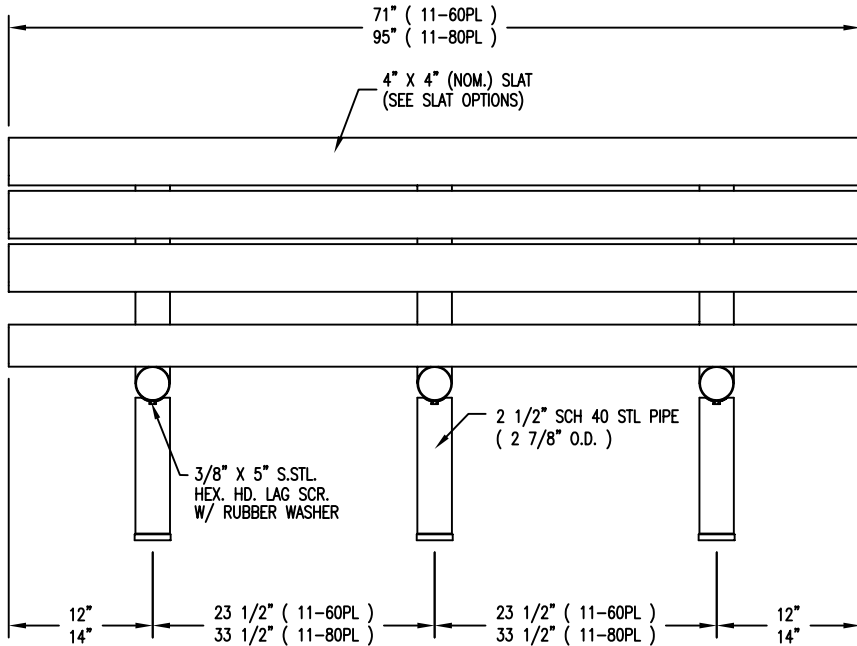
S-2 SURFACE MOUNT



S-1 EMBEDMENT



S-4 SUB FLOOR



LENGTH OPTIONS

- 6' BENCH
- 8' BENCH

SLAT OPTIONS

- "CEDAR" RECYCLED PLASTIC
- "GREEN" RECYCLED PLASTIC
- "GREY" RECYCLED PLASTIC
- "REDWOOD" RECYCLED PLASTIC
- "WALNUT" RECYCLED PLASTIC
- OTHER _____

NOTES

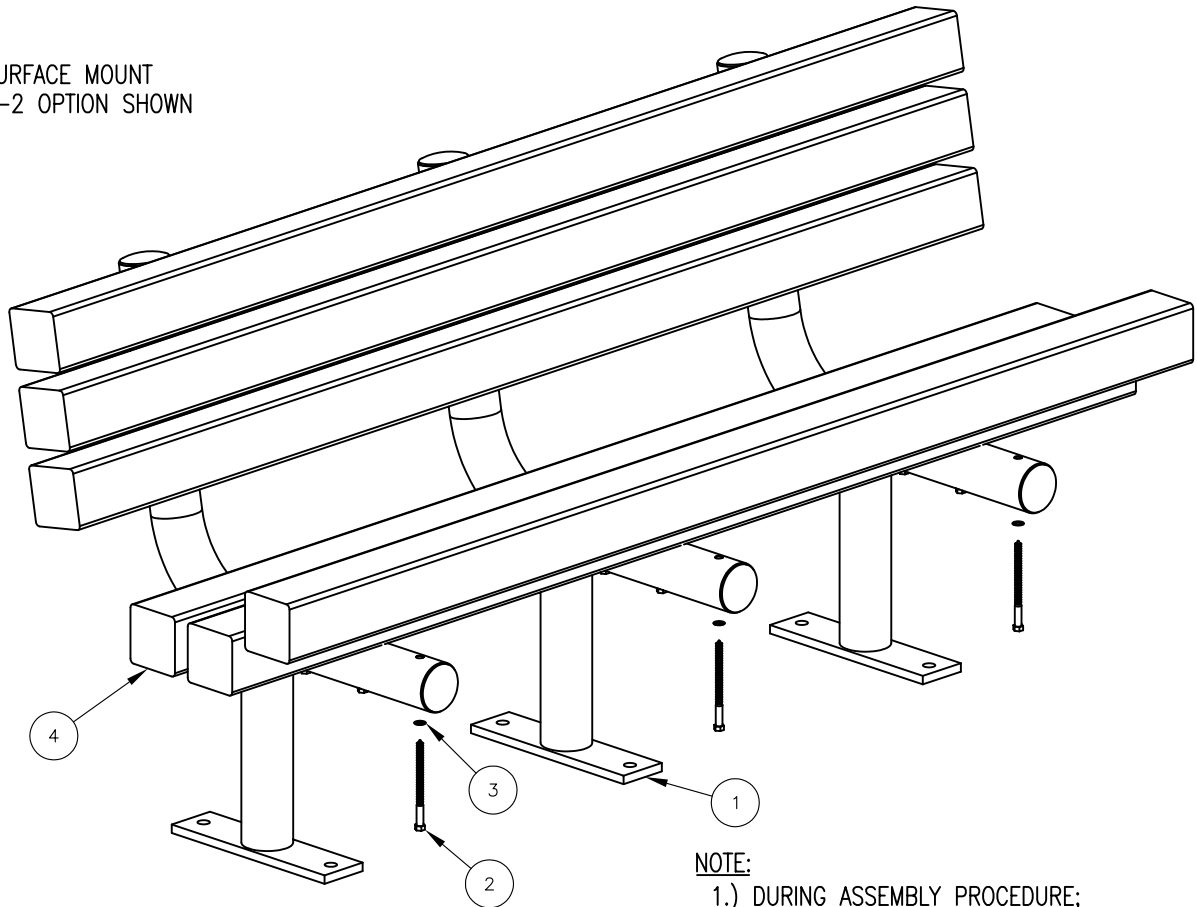
- 1.) ALL STL. MEMBERS COATED W/ ZINC RICH EPOXY THEN FINISHED W/ POLYESTER POWDER COATING.
- 2.) 1/2" X 3 3/4" EXPANSION ANCHOR BOLTS PROVIDED FOR S-2 AND S-4 OPTIONS.

DuMor, inc.
 P.O. Box 142 Mifflintown, PA 17059-0142

SCALE : NONE
 DATE DRAWN : 3/22/94
 DRAWN BY : AH
 DATE REV. : 12/02/09
 REV. BY : ESS

TITLE : BENCH
 REV. C
 DRAWING NUMBER 11 SERIES PL
 SHEET 1 OF 2

SURFACE MOUNT
S-2 OPTION SHOWN



NOTE:

- 1.) DURING ASSEMBLY PROCEDURE;
DO NOT COMPLETELY TIGHTEN HARDWARE.
- 2.) THE ACTUAL PARTS WILL NOT BE NUMBERED;
NUMBERS ONLY APPLY TO DRAWING.
- 3.) SEE SPEC. SHEET 1 FOR MOUNTING OPTIONS.

STEP 1:

- USE 3 - PC. SUPPORT POST (1)
- 18 - PCS. 3/8" X 5" SS. HEX HD. LAG SCR. (2)
- 18 - PCS. 3/8" ID. X 5/8" OD. RUBBER WASHER (3)
- 6 - PC. 4" X 4" X 71" PLASTIC SLAT (4)

ATTACH ONE PLASTIC SLAT (4) TO THREE SUPPORT POSTS (1) USING HARDWARE (2 & 3). TIGHTEN TO SNUG FIT. REPEAT UNTIL ALL PLASTIC SLATS ARE ATTACHED TO SUPPORT POSTS.

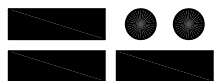
STEP 2:

UPON COMPLETION OF BENCH ASSEMBLY SQUARE ALL COMPONENTS THEN TIGHTEN ALL HARDWARE.

STEP 3:

ANCHOR ACCORDING TO SUPPORT OPTION USED.

ITEM	QTY	PART NO	DESCRIPTION
1	3	0-56-00-02/S-2	SUPPORT POST FOR SURFACE MOUNT
2	18	1-13-019	3/8" X 5" SS HEX HD LAG SCR
3	18	1-22-018	3/8" ID X 5/8" OD RUBBER WASHER
4	6	0-11-60PL-02	4" X 4" X 71" PLASTIC SLAT



DuMor, inc.

P.O. Box 142 Mifflintown, PA 17059-0142

SCALE : NONE
DATE DRAWN : 3/22/94
DRAWN BY : AH
DATE REV. : 12/02/09
REV. BY : ESS

TITLE : BENCH

REV. C

DRAWING NUMBER

11 SERIES PL

SHEET 2 OF 2