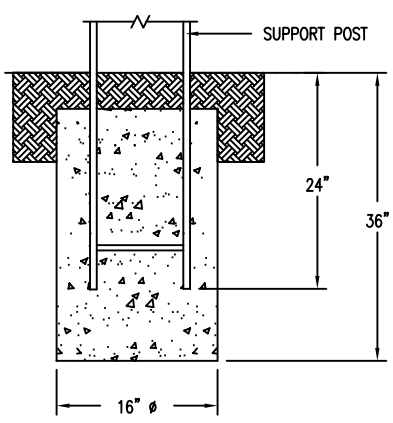
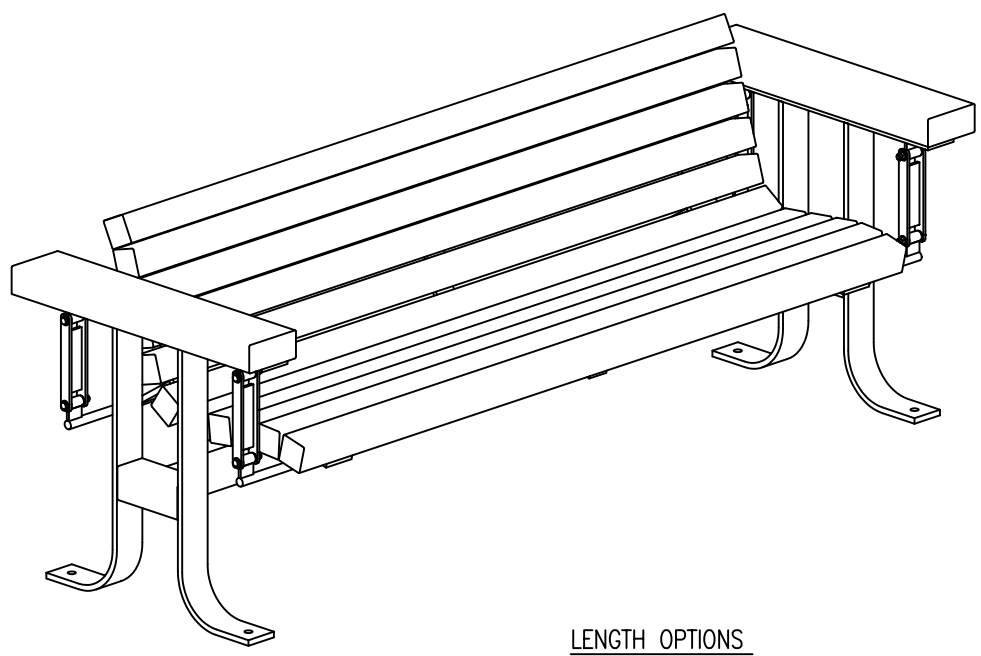


S-3 GULL WING  
AS SHOWN ABOVE



LENGTH OPTIONS

- 6' BENCH
- 8' BENCH

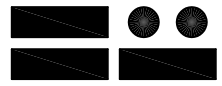
S-1 EMBEDMENT

NOTES

- 1.) ALL STL. MEMBERS COATED W/ ZINC RICH EPOXY THEN FINISHED W/ POLYESTER POWDER COATING.
- 2.) ALL WOOD MEMBERS TREATED W/ CLEAR PRESERVATIVE.
- 3.) 1/2" X 3 3/4" EXPANSION ANCHOR BOLTS PROVIDED FOR S-3.

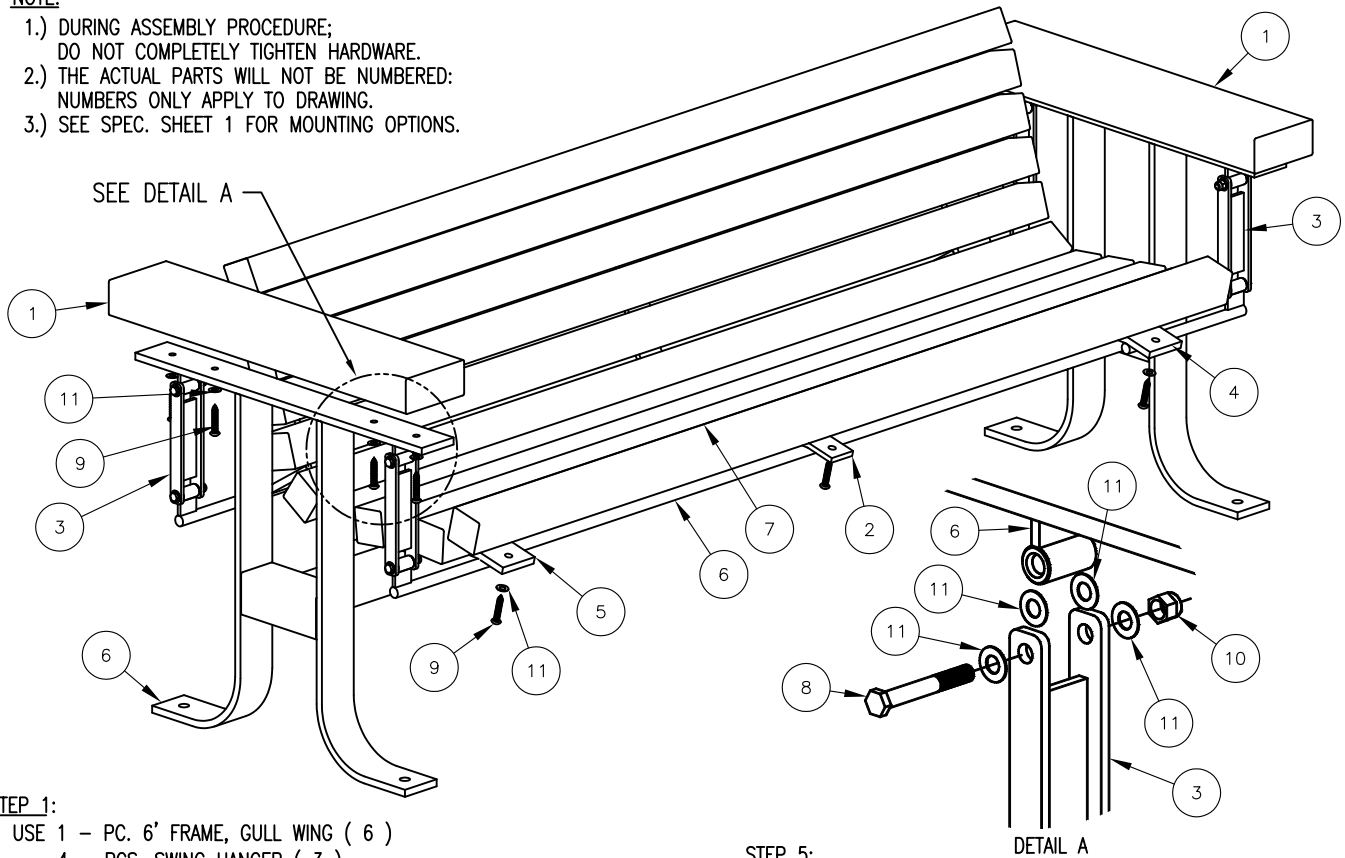
WOOD OPTIONS

- CLEAR ALL HEART REDWOOD S4S EE
- 'C' & BTR. DOUGLAS FIR KD S4S EE
- OTHER \_\_\_\_\_

 <b>DuMor, inc.</b> P.O. Box 142 Mifflintown, PA 17059-0142	SCALE :	NONE	TITLE :		GLIDER BENCH	
	DATE DRAWN :	3/22/94	REV.	DRAWING NUMBER	30 SERIES	SHEET 1 OF 2
	DRAWN BY :	AH	G			
	DATE REV. :	12/15/08				
REV. BY :	ESS					

**NOTE:**

- 1.) DURING ASSEMBLY PROCEDURE;  
DO NOT COMPLETELY TIGHTEN HARDWARE.
- 2.) THE ACTUAL PARTS WILL NOT BE NUMBERED:  
NUMBERS ONLY APPLY TO DRAWING.
- 3.) SEE SPEC. SHEET 1 FOR MOUNTING OPTIONS.



**STEP 1:**

- USE 1 - PC. 6' FRAME, GULL WING ( 6 )  
 4 - PCS. SWING HANGER ( 3 )  
 4 - PCS. 3/8" X 2 3/4" SS. HEX HD. CAP SCR. ( 8 )  
 16 - PCS. 3/8" SS. FLAT WASHER ( 11 )  
 4 - PC. 3/8" SS. NYLON LOCKNUT ( 10 )  
 ATTACH SWING HANGER TO 6' SEAT FRAME ASSEMBLY ( 6 ) USING HARDWARE ( 8, 10, & 11 ). TIGHTEN TO SNUG FIT. REPEAT UNTIL ALL SWING HANGER ARE ATTACHED. ( SEE DETAIL A )

**STEP 2:**

- USE 1 - PC. LEFT SEAT STRAP ( 4 )  
 2 - PCS. 3/8" X 2 3/4" SS. HEX HD. CAP SCR. ( 8 )  
 8 - PCS. 3/8" SS. FLAT WASHER ( 11 )  
 2 - PCS. 3/8" SS. NYLON LOCKNUT ( 10 )  
 ATTACH LEFT SEAT STRAP ( 4 ) TO STEP 1 ASSEMBLY USING HARDWARE ( 8, 10, & 11 ). TIGHTEN TO SNUG FIT.

**STEP 3:**

- USE 1 - PC. RIGHT SEAT STRAP ( 5 )  
 2 - PCS. 3/8" X 2 3/4" SS. HEX HD. CAP SCR. ( 8 )  
 8 - PCS. 3/8" SS. FLAT WASHER ( 11 )  
 2 - PCS. 3/8" SS. NYLON LOCKNUT ( 10 )  
 ATTACH RIGHT SEAT STRAP ( 5 ) TO STEP 2 ASSEMBLY USING HARDWARE ( 8, 10, & 11 ). TIGHTEN TO SNUG FIT.

**STEP 4:**

- USE 11 - PCS. 3" X 3" X 71" WOOD SLAT ( 7 )  
 22 - PCS. 3/8" X 2" SS. BTN. SKT. HD. LAG SCR. ( 9 )  
 22 - PCS. 3/8" SS. FLAT WASHER ( 11 )  
 ATTACH 3" X 3" X 71" WOOD SLAT ( 7 ) TO STEP 3 ASSEMBLY USING HARDWARE ( 9 & 11 ). TIGHTEN TO SNUG FIT. REPEAT UNTIL ALL SEAT SLATS ARE ATTACHED.

**STEP 5:**

- USE 1 - PC. CENTER CONTOUR STRAP ( 2 )  
 11 - PCS. 3/8" X 2" SS. BTN. SKT. HD. LAG SCR. ( 9 )  
 11 - PCS. 3/8" SS. FLAT WASHER ( 11 )  
 ATTACH CENTER CONTOUR STRAP ( 2 ) TO STEP 4 ASSEMBLY USING HARDWARE ( 9 & 11 ). TIGHTEN TO SNUG FIT.

**STEP 6:**

- USE 2 - PCS. 3" X 6" X 28" ARMREST SLAT ( 1 )  
 8 - PCS. 3/8" X 2" SS. BTN. SKT. HD. LAG SCR. ( 9 )  
 8 - PCS. 3/8" SS. FLAT WASHER ( 11 )  
 ATTACH 3" X 6" X 28" ARMREST SLAT ( 1 ) TO STEP 5 ASSEMBLY USING HARDWARE ( 9 & 11 ). TIGHTEN TO SNUG FIT.

**STEP 7:**

UPON COMPLETION OF GLIDER BENCH ASSEMBLY SQUARE ALL COMPONENTS THEN TIGHTEN ALL HARDWARE.

**STEP 8:**

ANCHOR ACCORDING TO SUPPORT OPTION USED.

ITEM	QTY	PART NO	DESCRIPTION
1	2	0-30-00-01	3" X 6" X 28" ARMREST SLAT
2	1	0-30-00-02	CENTER CONTOUR STRAP
3	4	0-30-00-04	SWING HANGER
4	1	0-30-00L-06	LEFT SEAT STRAP ASSEMBLY
5	1	0-30-00R-06	RIGHT SEAT STRAP ASSEMBLY
6	1	0-30-60-05/S-3	6' SEAT FRAME ASSEMBLY FOR GULL WING
7	11	0-32-60-01	3" X 3" X 71" WOOD SLAT
8	8	1-12-045	3/8" X 2 3/4" SS HEX HD CAP SCR
9	41	1-13-016	3/8" X 2" SS BTN SKT HD LAG SCR
10	8	1-20-007	3/8" SS NYLON LOCKNUT
11	73	1-22-024	3/8" SS FLAT WASHER

**DuMor, inc.**  
 P.O. Box 142 Mifflintown, PA 17059-0142

SCALE : NONE  
 DATE DRAWN : 11/2/99  
 DRAWN BY : JSB  
 DATE REV. : 12/15/08  
 REV. BY : ESS

TITLE : GLIDER BENCH ASSEMBLY  
 REV. G DRAWING NUMBER 30 SERIES SHEET 2 OF 2