

WOOD OPTIONS

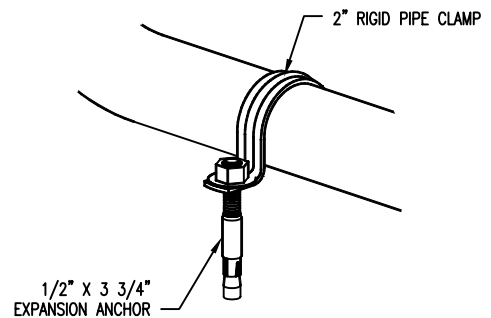
- # 1 SOUTHERN YELLOW PINE S4S EE
- 'C' & BTR. DOUGLAS FIR KD S4S EE
- OTHER _____

NOTE:

- 1.) 1/2" X 3 3/4" EXPANSION ANCHORS AND 2" PIPE CLAMPS PROVIDED (4 - PCS)
- 2.) ALL DOUGLAS FIR MEMBERS TREATED WITH CLEAR PRESERVATIVE.

FINISH OPTIONS:

- ALL STL. MEMBERS COATED W/ ZINC RICH EPOXY THEN FINISHED W/ POLYESTER POWDER COATING.
- HOT DIP GALV. AFTER FABRICATION.



ANCHORING DETAIL

DuMor, inc.
P.O. Box 142 Mifflintown, PA 17059-0142

SCALE : NONE
DATE DRAWN : 3/22/94
DRAWN BY : CDC
DATE REV. : 2/14/08
REV. BY : JSB

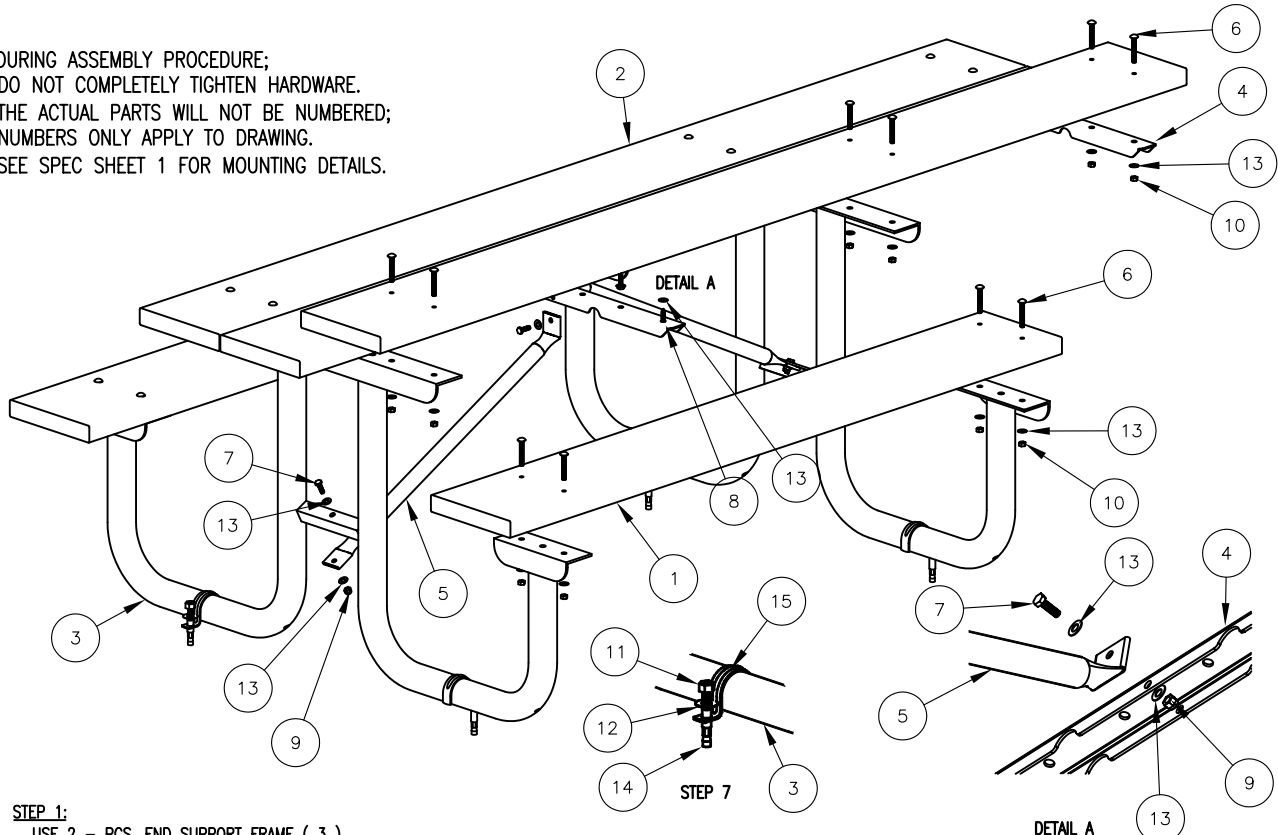
TITLE : PICNIC TABLE

REV. G

DRAWING NUMBER 77-68-1

SHEET 1 OF 2

- 1.) DURING ASSEMBLY PROCEDURE;
DO NOT COMPLETELY TIGHTEN HARDWARE.
- 2.) THE ACTUAL PARTS WILL NOT BE NUMBERED;
NUMBERS ONLY APPLY TO DRAWING.
- 3.) SEE SPEC SHEET 1 FOR MOUNTING DETAILS.



STEP 1:

USE 2 - PCS. END SUPPORT FRAME (3)
 3 - PCS. 2" X 10" X 95" WOOD PLANK (2)
 12 - PCS. 5/16" X 2 1/4" SS CGE. BOLT (6)
 12 - PCS. 5/16" SS FLAT WASHER (13)
 12 - PCS. 5/16" SS HEX NUT (10)
 ATTACH ALL 2" X 10" X 95" WOOD PLANK (2) TO END SUPPORT
 FRAME (3) USING HARDWARE (6, 10, & 13). TIGHTEN TO SNUG FIT.

STEP 2:

USE 2 - PCS. 2" X 10" X 65" WOOD PLANK (1)
 8 - PCS. 5/16" X 2 1/4" SS CGE. BOLT (6)
 8 - PCS. 5/16" SS FLAT WASHER (13)
 8 - PCS. 5/16" SS HEX NUT (10)
 ATTACH ALL 2" X 10" X 65" WOOD PLANK (1) TO STEP 1
 ASSEMBLY USING HARDWARE (6, 10, & 13). TIGHTEN TO SNUG FIT.

STEP 3:

USE 1 - PC. CENTER/END CHANNEL (4)
 2 - PCS. DIAGONAL BRACE FOR 6' TABLE (5)
 2 - PCS. 5/16" X 1" SS HEX HD CAP SCREW (7)
 2 - PCS. 5/16" SS NYLON LOCK NUT (9)
 4 - PCS. 5/16" SS FLAT WASHER (13)
 ATTACH CENTER/END CHANNEL (4) TO DIAGONAL BRACE FOR 6' TABLE
 (5) USING HARDWARE (7, 9, & 13) AS SHOWN IN DETAIL A. TIGHTEN
 TO SNUG FIT.

STEP 4:

USE 2 - PCS. 5/16" X 1" SS HEX HD CAP SCREW (7)
 2 - PCS. 5/16" SS NYLON LOCK NUT (9)
 10 - PCS. 5/16" SS FLAT WASHER (13)
 6 - PCS. 5/16" X 1 1/4" SS HEX HD. LAG SCREW (8)
 ATTACH STEP 3 ASSEMBLY TO STEP 2 ASSEMBLY USING HARDWARE (7, 9 & 13).
 TIGHTEN TO SNUG FIT. SQUARE TABLE BEFORE ATTACHING CENTER/END CHANNEL
 (4) TO 2" X 10" TABLE TOP PLANKS (2) USING 5/16" X 1 1/4" SS. HEX HD.
 LAG SCR. (8) AND 5/16" SS. FLAT WASHER (13). TIGHTEN TO SNUG FIT.
 (NO PILOT HOLES PROVIDED FOR 5/16" X 1 1/4" SS. HEX HD. LAG SCR.)

STEP 5:

USE 6 - PCS. 5/16" X 2 1/4" SS CGE. BOLT (6)
 1 - PC. CENTER/END CHANNEL (4)
 6 - PCS. 5/16" SS HEX NUT (10)
 6 - PCS. 5/16" SS FLAT WASHER (13)
 ATTACH CENTER/END CHANNEL TO STEP 4 ASSEMBLY USING HARDWARE
 (6, 10 & 13). TIGHTEN TO SNUG FIT.

STEP 6:

UPON COMPLETION OF TABLE ASSEMBLY SQUARE ALL
 COMPONENTS THEN TIGHTEN ALL HARDWARE.

STEP 7:

4 - PCS. 1/2" SS. HEX NUT (11)
 4 - PCS. 1/2" SS. FLAT WASHER (12)
 4 - PCS. 1/2" X 3 3/4" EXPANSION ANCHORS (14)
 4 - PCS. 2" RIGID PIPE CLAMP (15)
 PLACE TABLE IN SITE LOCATION DESIRED. PLACE 2" RIGID
 PIPE CLAMP IN CENTER OF TABLE LEGS. MARK HOLES
 AND MOVE 2" RIGID PIPE CLAMPS. DRILL 1/2" DIA HOLE
 IN CONCRETE AT MARKED HOLE LOCATIONS APPROX. 3 1/2" DEEP.
 BLOW OUT DUST IN DRILLED HOLES. PLACE 1/2" X 3 3/4"
 EXPANSION ANCHORS IN HOLES. PLACE NUT TO FLUSH
 WITH END AND DRIVE INTO GROUND. REMOVE NUT AND PLACE
 2" RIGID PIPE CLAMPS OVER TABLE LEGS AND ON 1/2" X 3 3/4"
 EXPANSION ANCHORS. ATTACH WASHER AND NUT AND TIGHTEN.

ITEM	QTY	PART NO	DESCRIPTION
1	2	0-71-68-1-01	2" X 10" X 65" SLAT, WOOD
2	3	0-71-68-1-02	2" X 10" X 95" WOOD SLAT
3	2	0-77-00-01	END SUPPORT FRAME
4	2	0-77-00-03	CENTER/END CHANNEL
5	2	0-77-60-02	DIAGONAL BRACE FOR 6' TABLE
6	26	1-11-062	5/16" X 2 1/4" SS CGE BOLT
7	4	1-12-061	5/16" X 1" SS HEX HD CAP SCR
8	6	1-13-001	5/16" X 1 1/4" SS HEX HD LAG SCR
9	4	1-20-016	5/16" SS NYLON LOCKNUT
10	26	1-21-015	5/16" SS HEX NUT
11	4	1-21-016	1/2" SS HEX NUT
12	4	1-22-015	1/2" SS FLAT WASHER
13	40	1-22-017	5/16" SS FLAT WASHER
14	4	1-17-003	1/2" X 3 3/4" SS EXPANSION ANCHOR
15	4	5-48-492	2" RIGID PIPE CLAMP, 9/16" DIA HOLE, PLTD

DuMor, inc.
 P.O. Box 142 Mifflintown, PA 17059-0142

SCALE : NONE
 DATE DRAWN : 3/22/94
 DRAWN BY : CDC
 DATE REV. : 2/14/08
 REV. BY : AWH

TITLE : PICNIC TABLE ASSEMBLY
 REV. G DRAWING NUMBER 77-68-1 SHEET 2 OF 2