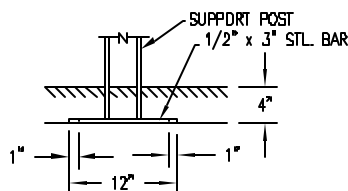
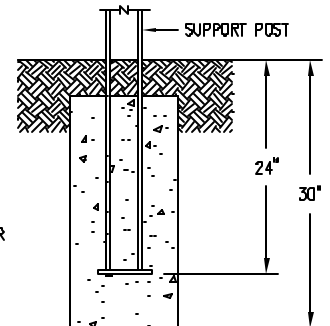


S-3 GULL WING



S-4 SUB FLOOR



S-1 EMBEDMENT

NOTES

- 1.) ALL STL. MEMBERS COATED W/ ZINC RICH EPOXY THEN FINISHED W/ POLYESTER POWDER COATING.
- 2.) ALL WOOD MEMBERS TREATED W/ CLEAR PRESERVATIVE.
- 3.) 1/2" X 3 3/4" EXPANSION ANCHOR BOLTS PROVIDED.
- 4.) 22 GAL. PLASTIC LINER PROVIDED.

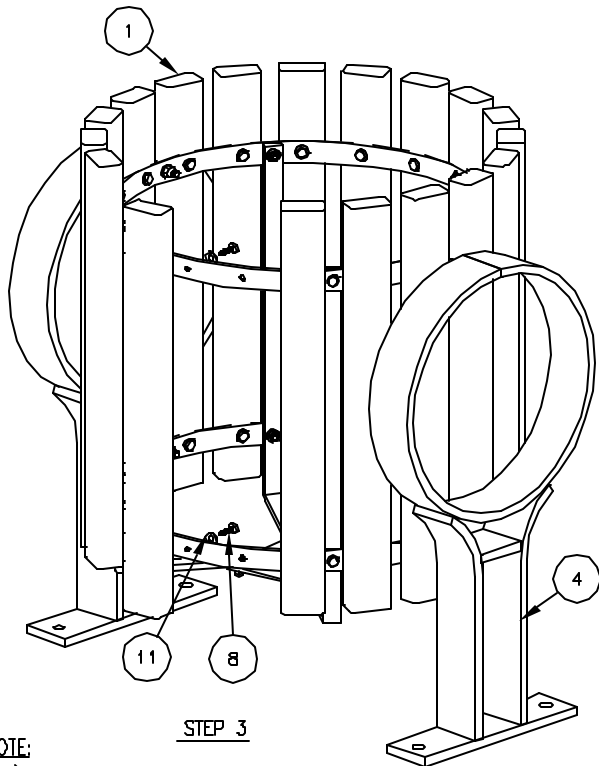
WOOD OPTIONS

- CLEAR ALL HEART REDWOOD S4S EE
- 'C' & BTR. DOUGLAS FIR KD S4S EE
- CLEAR WESTERN RED CEDAR S4S EE
- OTHER _____

DuMor, inc.
P.O. Box 142 Mifflintown, PA 17059-0142

SCALE :	NONE
DATE DRAWN :	3/22/94
DRAWN BY :	AH
DATE REV. :	9/7/00
REV. BY :	JSB

TITLE :	RECEPTACLE		
REV.	DRAWING NUMBER	85-22/46-00	
E		SHEET 1 OF 2	



NOTE:

- 1.) DURING ASSEMBLY PROCEDURE:
DO NOT COMPLETELY TIGHTEN HARDWARE.
- 2.) THE ACTUAL PARTS WILL NOT BE NUMBERED:
NUMBERS ONLY APPLY TO DRAWING.
- 3.) SEE SPEC. SHEET 1 FOR OTHER MOUNTING OPTIONS.

STEP 1:

- USE 2 - PCS. HOOP { 2 }
 4 - PCS. "L" SUPPORT STRAP { 3 }
 8 - PCS. 5/16" X 1" SS. HEX HD. CAP SCR. { 6 }
 8 - PCS. 5/16" SS. NYLON LOCK NUT { 10 }
 8 - PCS. 5/16" SS. FLAT WASHER { 12 }
- ATTACH "L" SUPPORT STRAP { 3 } TO HOOP { 2 } USING HARDWARE { 6, 10, & 12 }. TIGHTEN TO SNUG FIT.
 REPEAT UNTIL ALL "L" SUPPORT STRAPS ARE ATTACHED TO HOOPS.

STEP 2:

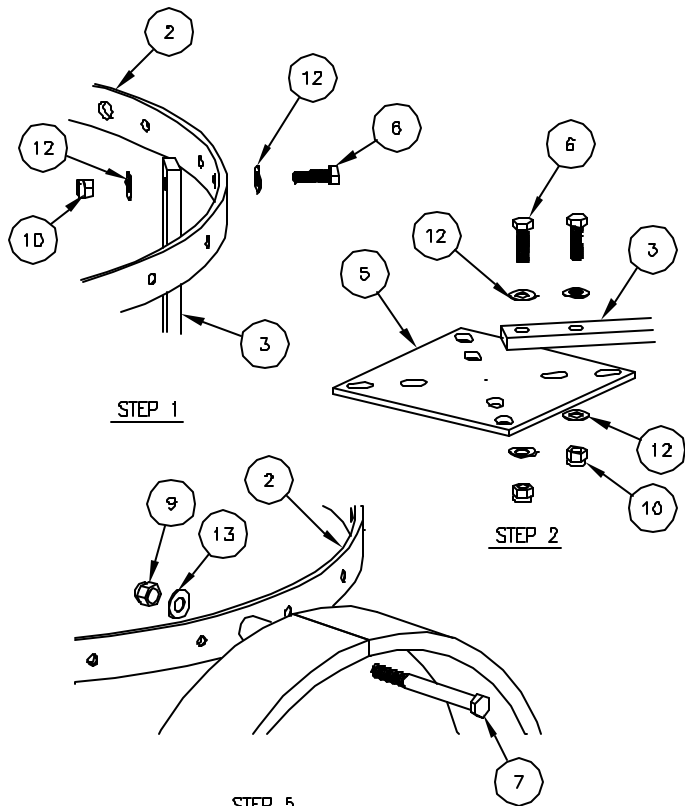
- USE 1 - PC. CENTER PLATE { 5 }
 8 - PCS. 5/16" X 1" SS. HEX HD. CAP SCR. { 6 }
 8 - PCS. 5/16" SS. NYLON LOCK NUT { 10 }
 8 - PCS. 5/16" SS. FLAT WASHER { 12 }
- ATTACH CENTER PLATE { 5 } TO STEP 1 ASSEMBLY USING HARDWARE { 6, 10, & 12 }. TIGHTEN TO SNUG FIT.

STEP 3:

- USE 20 - PCS. 2" X 3" X 23 3/4" WOOD SLAT { 1 }
 40 - PCS. 1/4" X 1 1/4" SS. HEX HD. LAG SCR. { 8 }
 40 - PCS. 1/4" SS. FLAT WASHER { 11 }
- ATTACH 2" X 3" X 23 3/4" WOOD SLATS { 1 } TO STEP 2 ASSEMBLY USING HARDWARE { 8 & 11 }. TIGHTEN TO SNUG FIT. REPEAT UNTIL ALL SLATS ARE ATTACHED.

STEP 4:

UPON COMPLETION OF BASKET ASSEMBLY SQUARE ALL COMPONENTS THEN TIGHTEN ALL HARDWARE.



STEP 5:

- USE 2 - PC. SURFACE MOUNT SUPPORT { 4 }
 4 - PC. 3/8" X 4" SS. HEX HD. CAP SCR. { 7 }
 4 - PC. 3/8" SS. NYLON LOCK NUT { 9 }
 4 - PC. 3/8" SS. FLAT WASHER { 13 }
- ATTACH SURFACE MOUNT SUPPORT { 4 } TO STEP 4 ASSEMBLY USING HARDWARE { 7, 9, & 13 } AND TIGHTEN ALL HARDWARE.

STEP 6:

TO ATTACH COVER, REMOVE ONE 1/4" X 1 1/4" LAG SCREW AND FASTEN OPEN END OF CABLE TO BASKET USING THE LAG REMOVED.

STEP 7:

MOUNT AND ANCHOR AS SPECIFIED.

ITEM	QTY	PART NO	DESCRIPTION
1	20	0-41-20-01	2" X 3" X 23 3/4" WOOD SLAT
2	2	0-41-20-02	HOOP FOR 20 GAL (21 11/16" DIA)
3	4	0-41-20-05	"L" SUPPORT STRAP FOR 20 GAL
4	2	0-85-00-01/5-2	SUPPORT FOR SURFACE MOUNT
5	1	0-85-00-02	CENTER PLATE { 85 }
6	16	1-12-061	5/16" X 1" SS HEX HD CAP SCR
7	4	1-12-081	3/8" X 4" SS HEX HD CAP SCR
8	40	1-13-004	1/4" X 1 1/4" SS HEX HD LAG SCR
9	4	1-20-007	3/8" SS NYLON LOCKNUT
10	16	1-20-016	5/16" SS NYLON LOCKNUT
11	40	1-22-006	1/4" SS FLAT WASHER
12	32	1-22-017	5/16" SS FLAT WASHER
13	4	1-22-024	3/8" SS FLAT WASHER

DuMor, inc.

P.O. Box 142 Mifflintown, PA 17059-0142

SCALE :

NONE

DATE DRAWN : 1/3/00

DRAWN BY : JSB

DATE REV. : 9/7/00

REV. BY : JSB

TITLE :

RECEPTACLE ASSEMBLY

REV.

E

DRAWING NUMBER

85-22/46-00

SHEET
2 OF 2