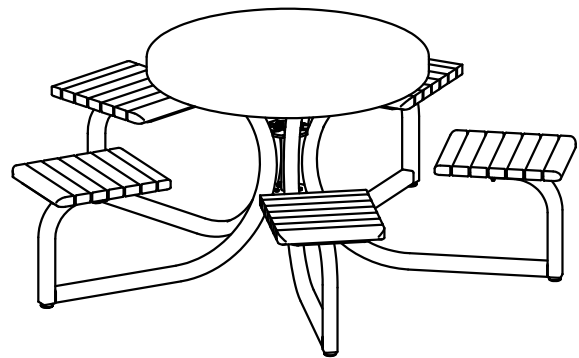


#### WOOD OPTIONS

- 'C' & BTR. DOUGLAS FIR KD S4S EE
- IPE S4S EE
- OTHER

#### NOTES:

- 1.) ALL STL. MEMBERS COATED W/ ZINC RICH EPOXY THEN FINISHED W/ POLYESTER POWDER COATING.
- 2.) 1/2" X 1 1/2" NYLON GLIDES & 1/2" X 3 3/4" EXPANSION ANCHOR BOLTS W/ S-2 PLATES PROVIDED.
- 3.) ALL WOOD MEMBERS TREATED W/ CLEAR PRESERVATIVE.



**DuMor, inc.**  
P.O. Box 142 Mifflintown, PA 17059-0142

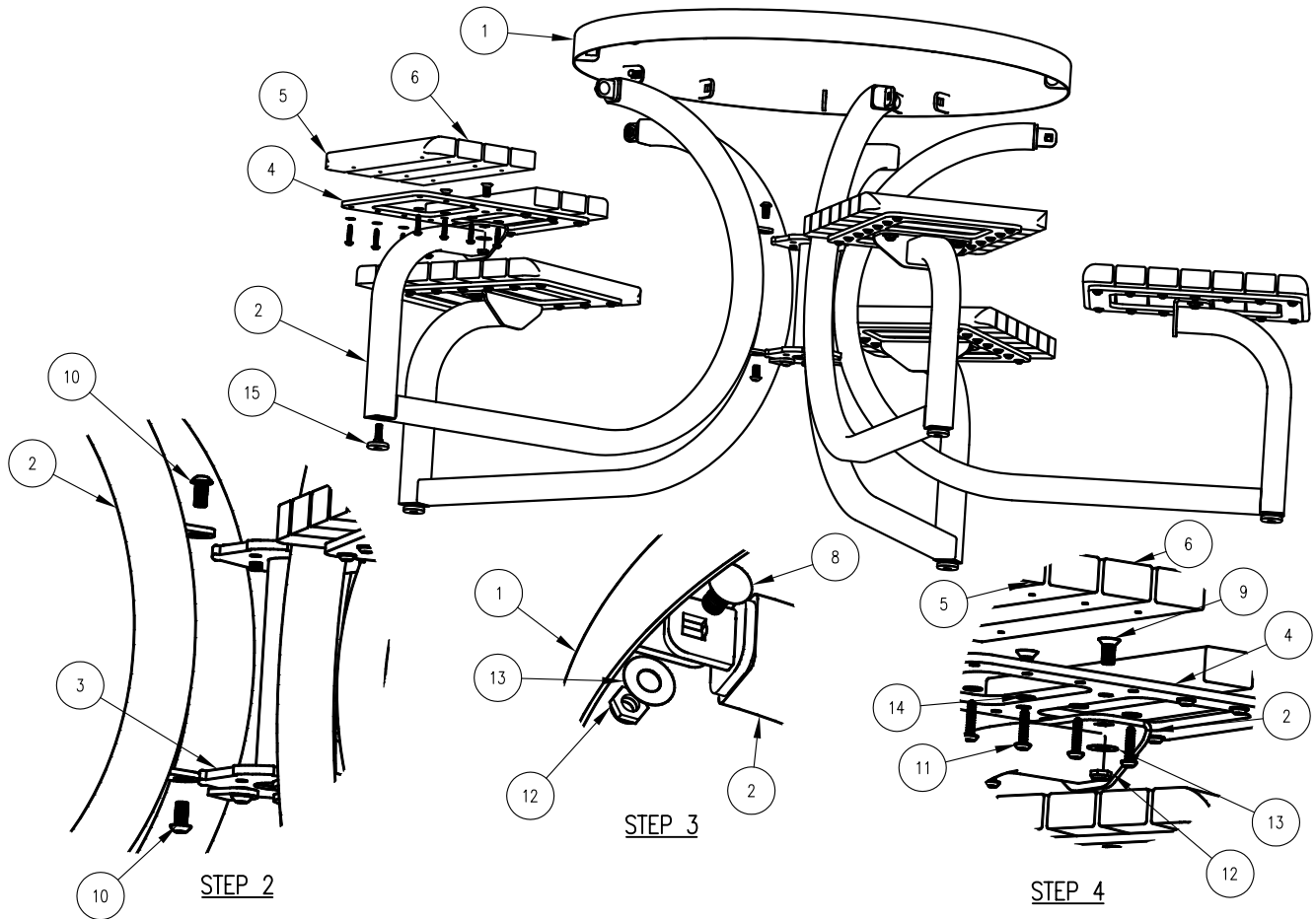
SCALE : NONE  
DATE DRAWN : 10/12/12  
DRAWN BY : JSB  
DATE REV. :  
REV. BY :

TITLE : TABLE

REV. A

DRAWING NUMBER 445-35

SHEET 1 OF 2



**STEP 1:**

USE 5 - PCS. TABLE SUPPORT LEG ( 2 )  
 5 - PCS. SURFACE MOUNT FOOT PAD ( 7 )  
 5 - PCS. 1/2" X 1 1/2" SWIVEL GLIDE ( 15 )  
 ATTACH SURFACE MOUNT FOOT PAD ( 7 ) OR 1/2" X 1 1/2" SWIVEL GLIDE ( 15 ) TO TABLE SUPPORT LEG ( 2 ) REPEAT UNTIL ALL SURFACE MOUNT FOOT PAD OR GLIDES ARE ATTACHED.

**STEP 2:**

USE 1 - PC. 5 SEAT BOLTING COLLAR ( 3 )  
 10 - PCS. 1/2" X 1" SS BTN SKT HD CAP SCR ( 10 )  
 ATTACH STEP 1 ASSEMBLY TO 5 SEAT BOLTING COLLAR ( 3 ) USING HARDWARE ( 10 ). TIGHTEN TO SNUG FIT. REPEAT UNTIL ALL STEP 1 ASSEMBLY ATTACHED.

**STEP 3:**

USE 1 - PC. STL TABLE TOP ( 1 )  
 5 - PCS. 1/2" X 1" SS CGE BOLT ( 8 )  
 5 - PCS. 1/2" SS. THIN LOCKNUT ( 12 )  
 5 - PCS. 1/2" SS. FLAT WASHER ( 13 )  
 ATTACH STL TABLE TOP ( 1 ) TO STEP 2 ASSEMBLY USING HARDWARE ( 8, 12 & 13 ). TIGHTEN TO SNUG FIT.

**STEP 4:**

USE 5 - PCS. SEAT BOLT PLATE ( 4 )  
 10 - PCS. 2" X 3" X 16" EDGE SLAT ( 5 )  
 25 - PCS. 2" X 3" X 16" INT'R SLAT ( 6 )  
 10 - PCS. 1/2" X 1" SS. FLT SKT HD CAP SCR ( 9 )  
 10 - PCS. 1/2" SS. THIN LOCKNUT ( 12 )  
 10 - PCS. 1/2" SS. FLAT WASHER ( 13 )  
 70 - PCS. 5/16" X 1 1/2" SS. BTN SKT HD LAG ( 11 )  
 70 - PCS. 5/16" SS. FLAT WASHER ( 14 )  
 ATTACH SEAT BOLT PLATE ( 4 ) TO STEP 3 ASSEMBLY USING HARDWARE ( 9, 12 & 13 ). TIGHTEN COMPLETELY. REPEAT UNTIL ALL SEAT BOLT PLATE ARE ATTACHED. THEN ATTACHED SLATS TO SEAT BOLT PLATE USING HARDWARE ( 11 & 14 ). TIGHTEN TO SNUG FIT. REPEAT UNTIL ALL SLATS ARE ATTACHED.

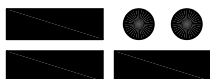
**STEP 5:**

UPON COMPLETION OF TABLE ASSEMBLY SQUARE ALL COMPONENTS THEN TIGHTEN ALL HARDWARE.

**NOTES:**

- 1.) DURING ASSEMBLY PROCEDURE; DO NOT COMPLETELY TIGHTEN HARDWARE.
- 2.) THE ACTUAL PARTS WILL NOT BE NUMBERED; NUMBERS ONLY APPLY TO DRAWING.

ITEM	QTY	PART NO	DESCRIPTION
1	1	0-445-00-01	STL TABLE TOP
2	5	0-445-00-02	TABLE SUPPORT LEG
3	1	0-445-05-03	5 SEAT BOLTING COLLAR
4	5	0-445-30-04	SEAT BOLT PLATE
5	10	0-445-30-05	2" X 3" X 16" EDGE SLAT, WOOD
6	25	0-445-30-06	2" X 3" X 16" INT'R SLAT, WOOD
7	5	0-94-00-02/S-2	SURFACE MOUNT FOOT PAD, PC
8	5	1-11-068	1/2" X 1" SS CGE BOLT
9	10	1-12-014	1/2" X 1" SS FLT SKT HD CAP SCR
10	10	1-12-056	1/2" X 1" SS BTN SKT HD CAP SCR
11	70	1-13-023	5/16" X 1 1/2" SS BTN SKT HD LAG
12	15	1-20-018	1/2" SS THIN NYLON LOCKNUT
13	15	1-22-015	1/2" SS FLAT WASHER
14	70	1-22-017	5/16" SS FLAT WASHER
15	5	5-48-078	1/2" X 1 1/2" SWIVEL GLIDE



**DuMor, inc.**

P.O. Box 142 Mifflintown, PA 17059-0142

SCALE : NONE  
 DATE DRAWN : 10/12/12  
 DRAWN BY : JSB  
 DATE REV. :  
 REV. BY :

TITLE : TABLE ASSEMBLY

REV. A

DRAWING NUMBER

445-35

SHEET 2 OF 2