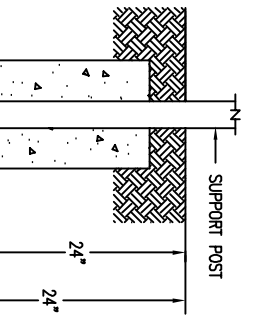
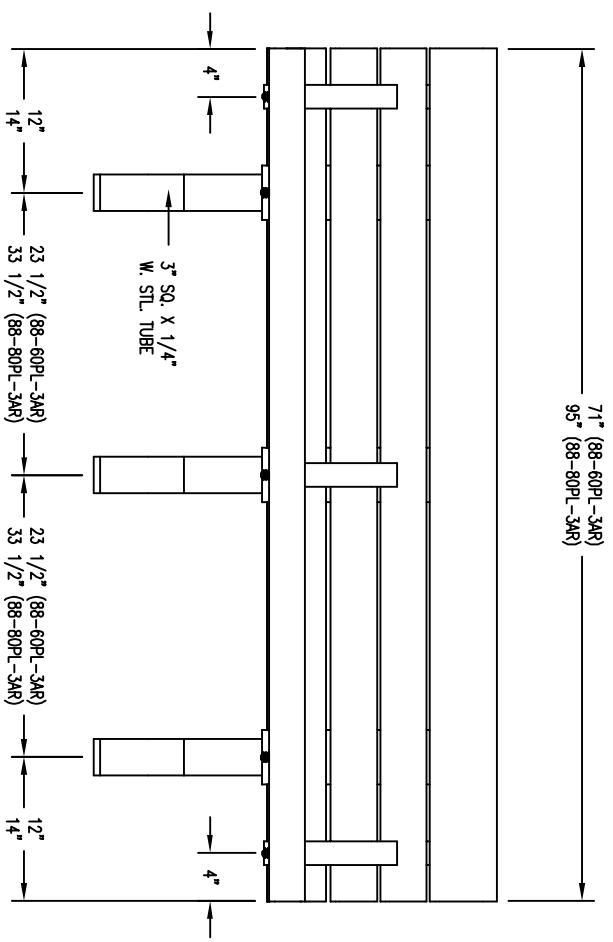
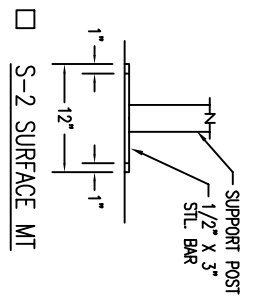


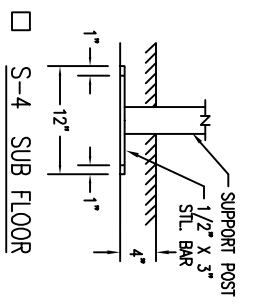
S-3 GULL-WING



S-1 EMBEDMENT



S-2 SURFACE MT



S-4 SUB FLOOR

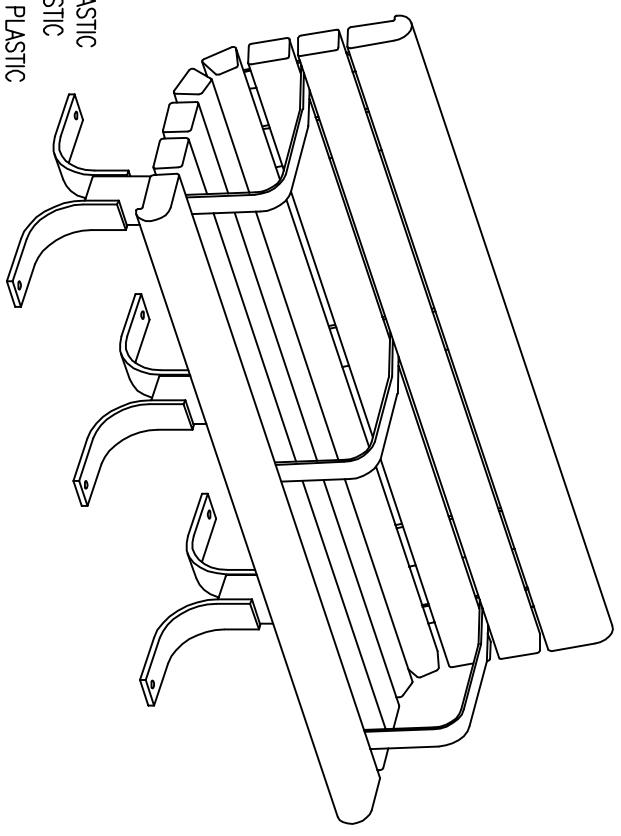
- LENGTH OPTIONS
- 6' BENCH
 - 8' BENCH

SLAT OPTIONS

- "CEDAR" RECYCLED PLASTIC
- "GREY" RECYCLED PLASTIC
- "REDWOOD" RECYCLED PLASTIC
- "WALNUT" RECYCLED PLASTIC
- OTHER _____

NOTES:

- 1.) ALL STL. MEMBERS COATED W/ ZINC RICH EPOXY THEN FINISHED W/ POLYESTER POWDER COATING.
- 2.) 1/2" X 3 3/4" EXPANSION ANCHOR BOLTS PROVIDED FOR OPTIONS S-2, S-3, & S-4.



BENCH

DATE DRAWN : 03/15/01	REV.
DRAWN BY : CDC	D
DATE REV. : 10/19/12	
REV. BY : ESS	

DRAWING NUMBER

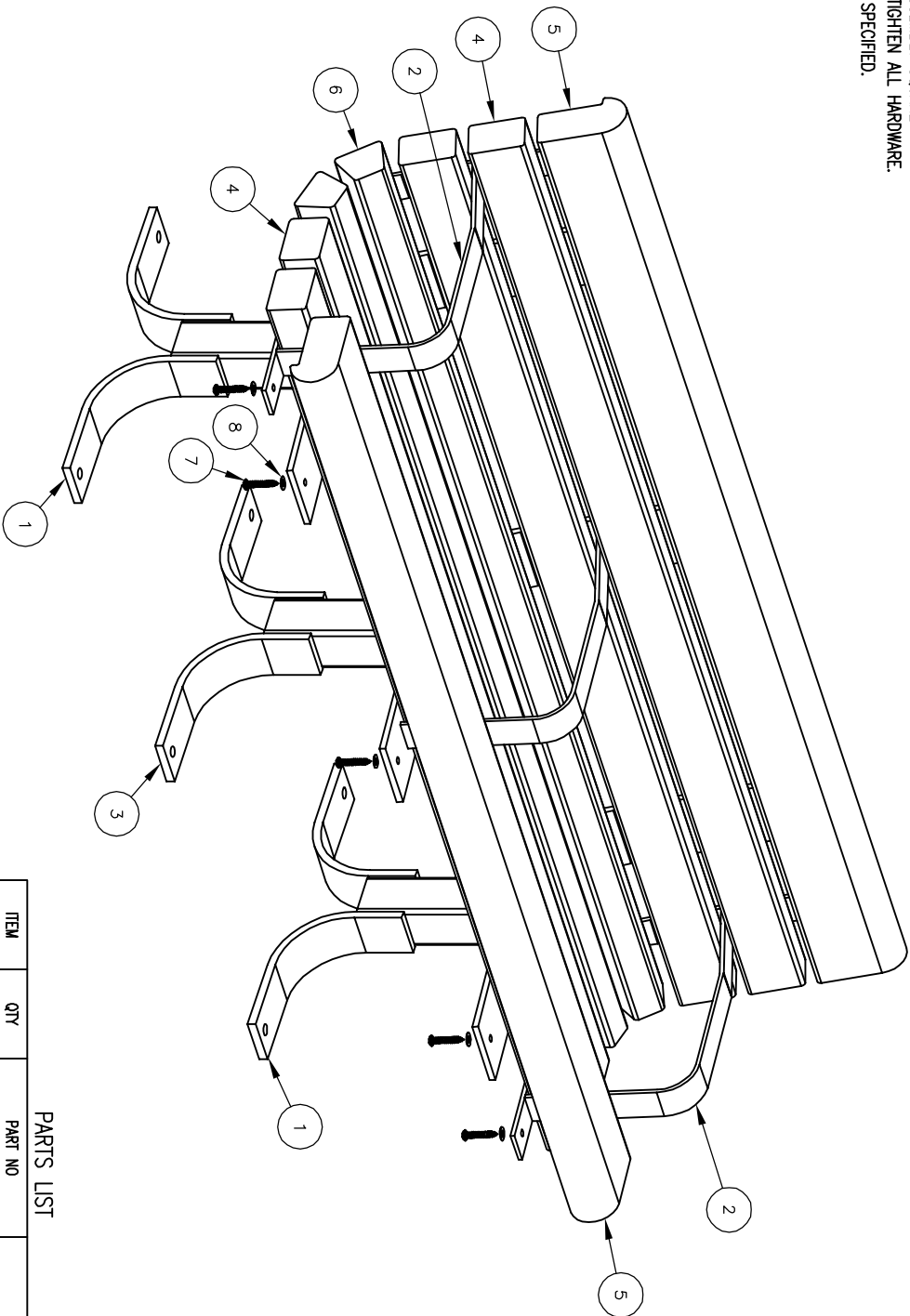
88 SER PL-3AR

NOTES:

- 1.) DURING ASSEMBLY PROCEDURE:
DO NOT COMPLETELY TIGHTEN HARDWARE.
- 2.) THE ACTUAL PARTS WILL NOT BE NUMBERED.
NUMBERS ONLY APPLY TO DRAWING.
- 3.) UPON COMPLETION OF ASSEMBLY SQUARE
ALL COMPONENTS THEN TIGHTEN ALL HARDWARE.
- 4.) MOUNT AND ANCHOR AS SPECIFIED.

- 1 ATTACH SLATS TO SUPPORTS, THEN ATTACH ARMRESTS TO SLATS.

TOOLS REQ'D
 3/4" WRENCH
 1/4" ALLEN WRENCH
 1/2" MASONRY DRILL BIT
 DRILL



PARTS LIST

ITEM	QTY	PART NO	DESCRIPTION
1	2	0-88-00-01/S-3	BENCH SUPPORT FOR GULLWING
2	2	0-88-00-05	CONTOUR STRAP W/ ARMREST
3	1	0-88-00AR-01/S3	GULL WING SUPPORT W/ARM
4	4	0-88-60PL-22	3" X 4" X 71" INTR SLAT, 2 ARMS, PLASTIC
5	2	0-88-60PL-23	71" EDGE SLAT, 2 ARMS, PLASTIC
6	2	0-88-60PL-24	71" TRAP SLAT, 2 ARMS, PLASTIC
7	40	1-13-016	3/8" X 2" SS BTN SKT HD LAG SCR
8	40	1-22-024	3/8" SS FLAT WASHER

ITEM	QTY	PART NO	DESCRIPTION
9	2	K-ANCO860-3	1/2" X 3 3/4" SS ANCHOR KIT (3PCS)
10	1	K-BL0632-40	3/8" LAG HARDWARE KIT (40PC)

KITS PROVIDED



ASSEMBLY INSTRUCTIONS

DATE DRAWN : 07/14/09	REV. D
DRAWN BY : ESS	
DATE REV. : 10/19/12	
REV. BY : ESS	

DRAWING NUMBER	88 SER PL-3AR	SHEET	2 OF 2
----------------	---------------	-------	--------