

WOOD OPTIONS

- 'C' & BTR. DOUGLAS FIR KD S4S EE
- IPE S4S EE
- OTHER _____

NOTES

- 1.) ALL STL. MEMBERS COATED W/ ZINC RICH EPOXY THEN FINISHED W/ POLYESTER POWDER COATING.
- 2.) $1/2$ " X $3 \frac{3}{4}$ " EXPANSION ANCHOR BOLTS PROVIDED.

PARTS LIST

ITEM	QTY	PART NO	DESCRIPTION
1	3	0-460-00-02	CONTOUR STRAP
2	2	0-460-60-03	71 3/4" ALUM EXTRUSION
3	1	0-461-00L-01	LEFT BKLS BENCH SUPPORT
4	1	0-461-00R-01	RIGHT BKLS BENCH SUPPORT
5	3	0-57-60-01	2" X 3" X 71" WOOD INT'R SLAT
6	4	1-12-053	5/16" X 1 1/2" SS BTN SKT HD CAP SCR
7	9	1-13-023	5/16" X 1 1/2" SS BTN SKT HD LAG
8	9	1-22-017	5/16" SS FLAT WASHER

KITS PROVIDED

ITEM	QTY	PART NO	DESCRIPTION
9	1	K-ANC0860-4	1/2" X 3 3/4" SS ANCHOR KIT (4PC)
10	1	K-BC0524-4	5/16" CAP HARDWARE KIT (4PC)
11	1	K-BL0524-10	5/16" LAG HARDWARE KIT (10PC)

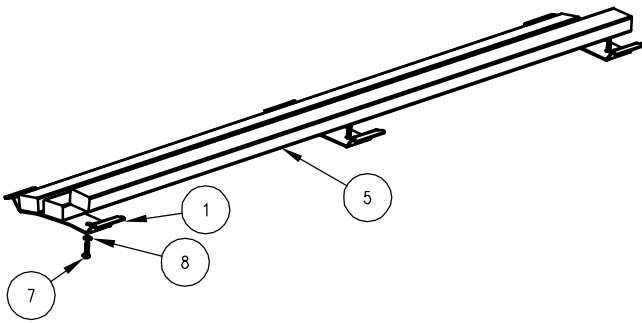
NOTES:

- 1.) DURING ASSEMBLY PROCEDURE;
DO NOT COMPLETELY TIGHTEN HARDWARE.
- 2.) THE ACTUAL PARTS WILL NOT BE NUMBERED.
NUMBERS ONLY APPLY TO DRAWING.
- 3.) UPON COMPLETION OF ASSEMBLY SQUARE
ALL COMPONENTS THEN TIGHTEN ALL HARDWARE.
- 4.) MOUNT AND ANCHOR AS SPECIFIED.

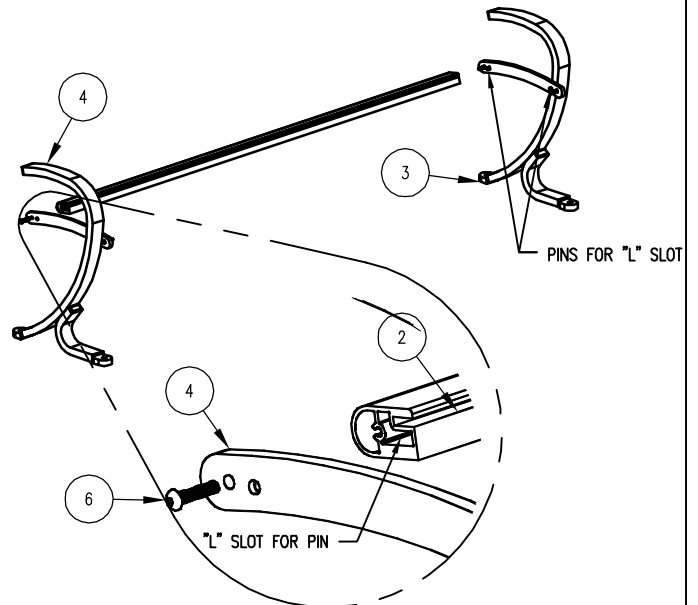
TOOLS REQ'D

- 3/4" WRENCH
1/4" ALLEN WRENCH
3/16" ALLEN WRENCH
1/2" MASONRY DRILL BIT
DRILL

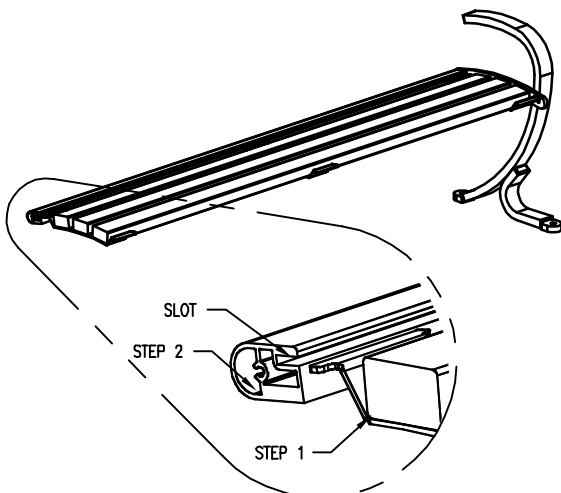
① ATTACH SLATS TO CONTOUR STRAPS.



② ATTACH ALUM. EXTRUSION AS SHOWN, TO LEFT & RIGHT BENCH SUPPORTS, ENSURE PINS ARE IN "L" SLOTS.



③ INSERT STEP 1 INTO STEP 2, USING SLOT ON ALUM. EXTRUSION.
NOTE: RIGHT BENCH SUPPORT NOT SHOWN FOR CLARITY.



④ ATTACH REMAINING ALUM. EXTRUSION TO SUPPORTS, AS IN STEP 2.

