

- SLAT OPTIONS**
- "CEDAR" RECYCLED PLASTIC
 - "GREY" RECYCLED PLASTIC
 - "REDWOOD" RECYCLED PLASTIC
 - "WALNUT" RECYCLED PLASTIC
 - OTHER _____

NOTES:

1.) 1/2" x 3 3/4" EXPANSION ANCHORS AND 2" PIPE CLAMPS PROVIDED (4 - PCS)

ANCHORING DETAIL

PARTS LIST

ITEM	QTY	PART NO	DESCRIPTION
1	2	0-71-68-1PL-1	2" X 10" X 65" SLAT, PLASTIC
2	3	0-71-68-1PL-2	2" X 10" X 95" SLAT, PLASTIC
3	4	0-72-00-02	END SUPPORT FRAME
4	2	0-72-00-03	DIAGONAL BRACE
5	2	0-72-00-04	TOP ANGLE
6	4	0-72-00-05	SEAT PLATE
7	2	0-77-60-14HG	6' SEAT BRACE, HG
8	1	0-77-68-1-15HG	TABLE TOP BRACE, HANDICAPPED HG
9	36	1-11-062	5/16" X 2 1/4" SS CGE BOLT
10	12	1-12-002	3/8" X 3" SS HEX HD CAP SCR
11	2	1-12-039	3/8" X 5 1/2" SS HEX HD CAP SCR
12	2	1-13-001	5/16" X 1 1/4" SS HEX HD LAG SCR
13	4	1-17-003	1/2" X 3 3/4" SS EXPANSION ANCHOR
14	14	1-20-007	3/8" SS NYLON LOCKNUT
15	36	1-21-015	5/16" SS HEX NUT
16	4	1-21-016	1/2" SS HEX NUT
17	4	1-22-015	1/2" SS FLAT WASHER
18	38	1-22-017	5/16" SS FLAT WASHER
19	44	1-22-018	3/8" ID X 5/8" OD RUBBER WASHER
20	28	1-22-024	3/8" SS FLAT WASHER
21	4	5-48-492	2" RIGID PIPE CLAMP, 9/16" DIA HOLE, PLTD
22	8	5-48-859	2" BLACK PLASTIC PLUG

NOTES:

- 1.) DURING ASSEMBLY PROCEDURE; DO NOT COMPLETELY TIGHTEN HARDWARE.
- 2.) THE ACTUAL PARTS WILL NOT BE NUMBERED. NUMBERS ONLY APPLY TO DRAWING.
- 3.) UPON COMPLETION OF ASSEMBLY SQUARE ALL COMPONENTS THEN TIGHTEN ALL HARDWARE.
- 4.) MOUNT AND ANCHOR AS SPECIFIED.

TOOLS REQ'D

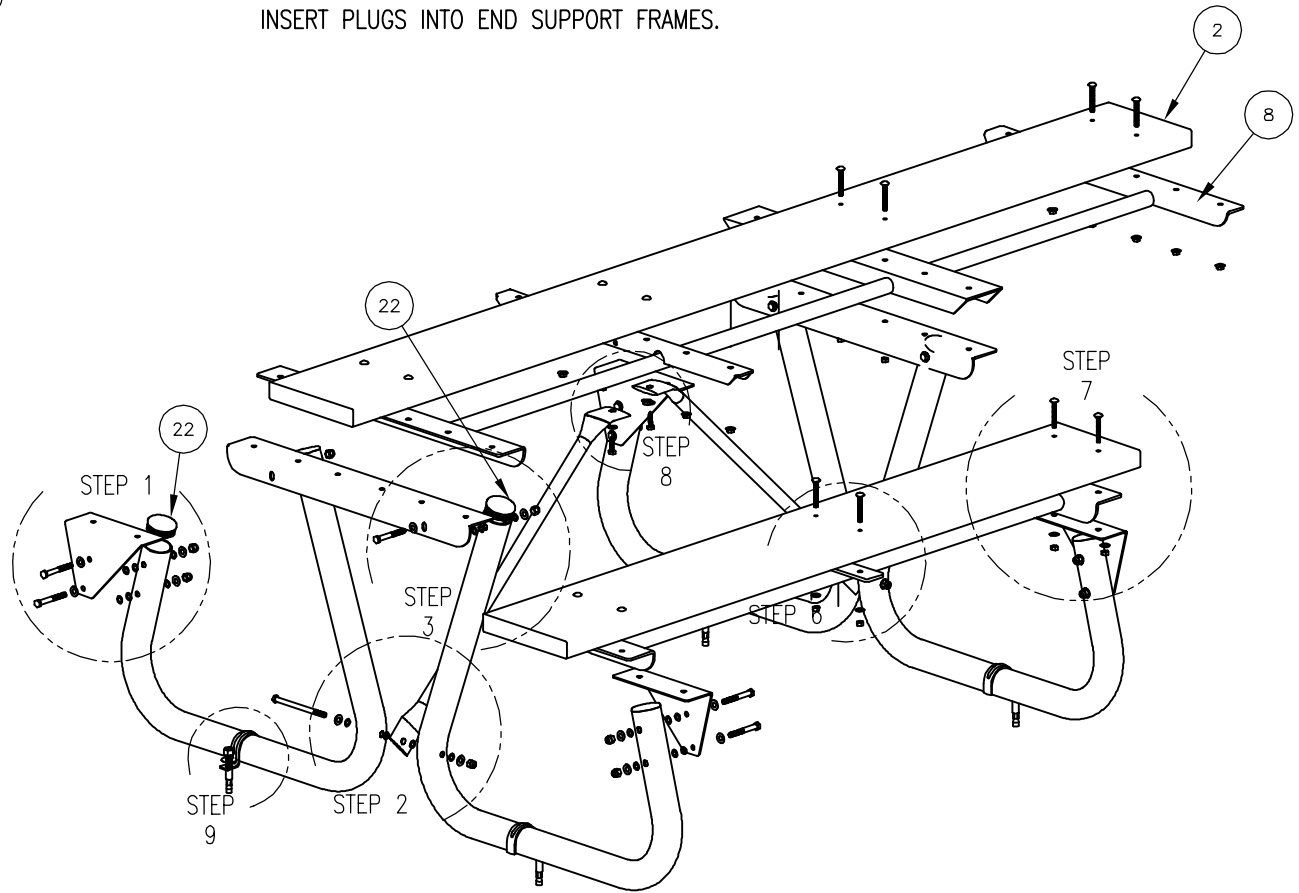
- 1/2" WRENCH
- 3/4" WRENCH
- 9/16" WRENCH
- 1/2" MASONRY DRILL BIT DRILL

KITS PROVIDED

ITEM	QTY	PART NO	DESCRIPTION
23	1	K-72PL	72 SERIES HARDWARE KIT
25	1	K-ANCO860-4	1/2" X 3 3/4" SS ANCHOR KIT (4PC)
24	1	K-ANC-CLIP-16-4	2" SCH 40 CLAMP, 4 PCS

1

INSERT PLUGS INTO END SUPPORT FRAMES.



ASSEMBLY INSTRUCTIONS

DATE DRAWN : 03/22/94
 DRAWN BY : AH
 DATE REV. : 09/23/15
 REV. BY : ESS

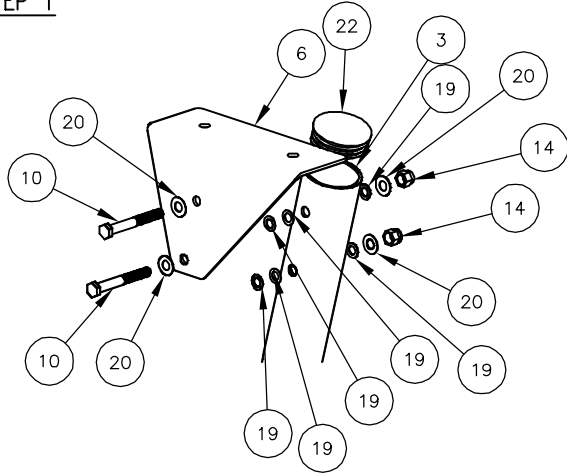
REV. J

DRAWING NUMBER

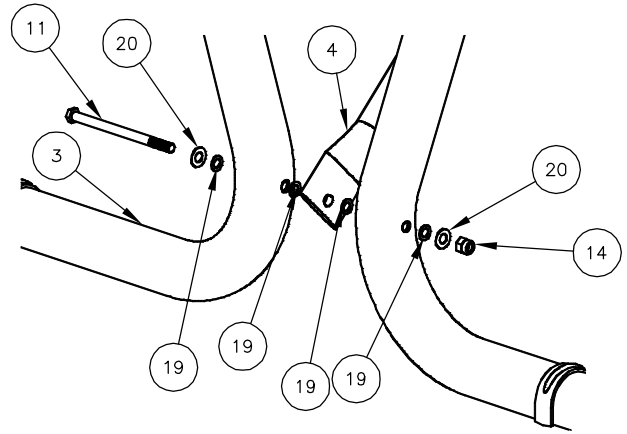
72-68-1PL

SHEET 2 OF 3

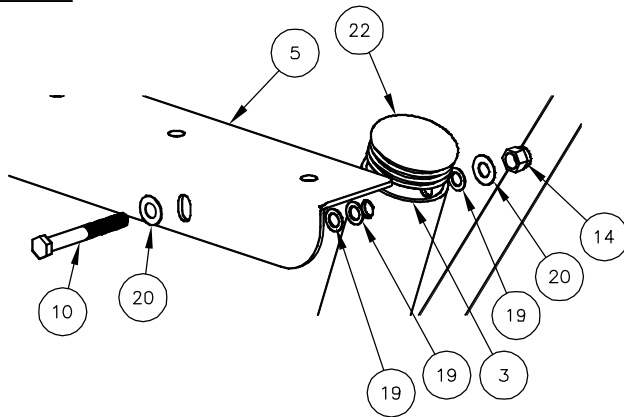
STEP 1



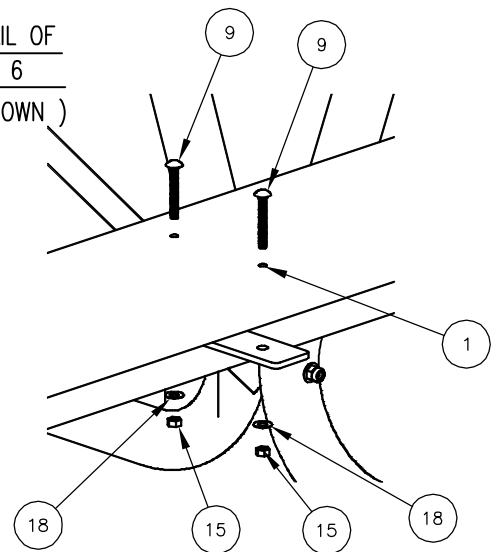
STEP 2



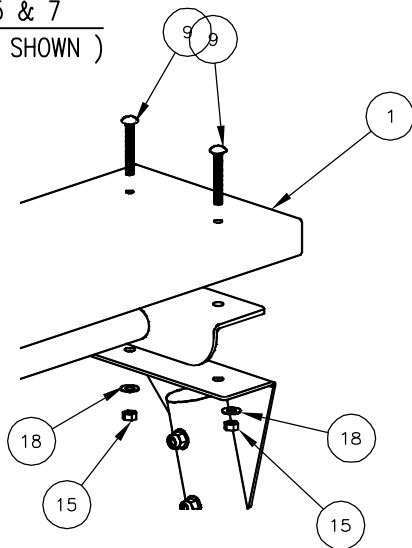
STEP 3



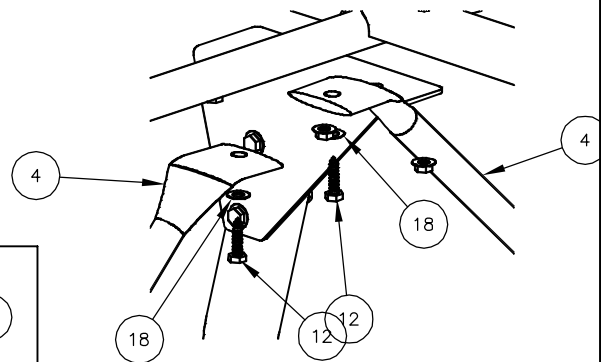
TYPICAL DETAIL OF
STEP 4 & 6
(STEP 6 SHOWN)



TYPICAL DETAIL OF
STEP 5 & 7
(STEP 7 SHOWN)



STEP 8



STEP 9

