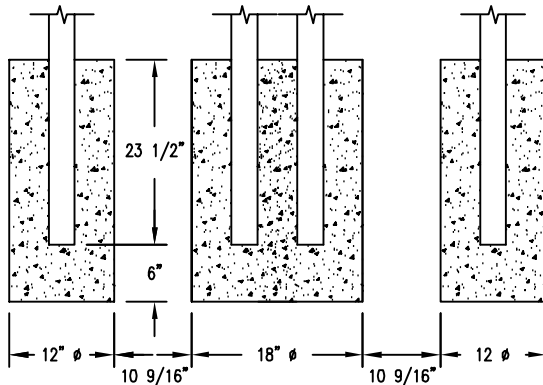
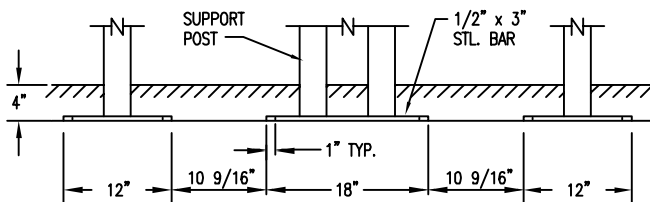
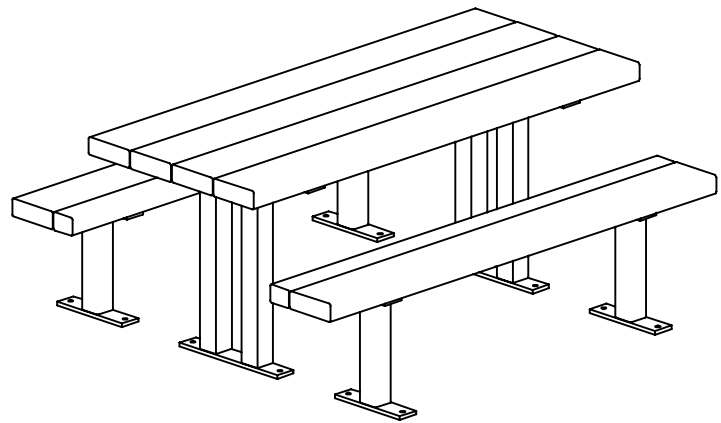


S-2 SURFACE  
( AS SHOWN )



S-1 EMBEDMENT



S-4 SUB FLOOR

LENGTH OPTIONS

- 6' TABLE
- 8' TABLE

WOOD OPTIONS

- 'C' & BTR. DOUGLAS FIR KD S4S EE
- IPE S4S EE
- OTHER \_\_\_\_\_

NOTES

- 1.) ALL STL. MEMBERS COATED W/ ZINC RICH EPOXY THEN FINISHED W/ POLYESTER POWDER COATING.
- 2.) 1/2" X 3 3/4" EXPANSION ANCHOR BOLTS PROVIDED FOR OPTIONS S-2 AND S-4.

**NOTES:**

- 1.) DURING ASSEMBLY PROCEDURE;  
DO NOT COMPLETELY TIGHTEN HARDWARE.
- 2.) THE ACTUAL PARTS WILL NOT BE NUMBERED.  
NUMBERS ONLY APPLY TO DRAWING.
- 3.) UPON COMPLETION OF ASSEMBLY SQUARE  
ALL COMPONENTS THEN TIGHTEN ALL HARDWARE.
- 4.) MOUNT AND ANCHOR AS SPECIFIED.

**TOOLS REQ'D**

- 3/4" WRENCH
- 1/4" ALLEN WRENCH
- 1/2" MASONRY DRILL BIT  
DRILL

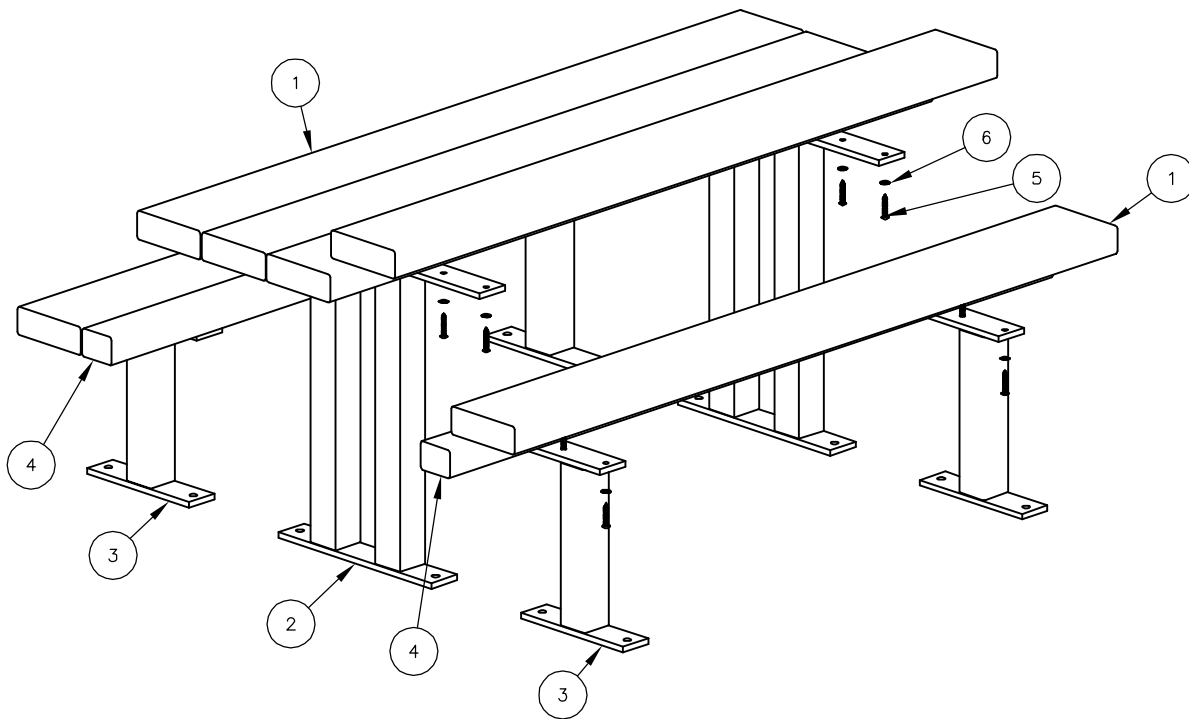
**PARTS LIST FOR S-2**

ITEM	QTY	PART NO	DESCRIPTION
1	6	0-38-60-01	3" X 8" X 71" SLAT, WOOD
2	2	0-75-00-03/S-2	TABLE SUPPORT FOR SURFACE MOUNT
3	4	0-75-00-04/S-2	SEAT SUPPORT FOR SURFACE MOUNT
4	2	0-88-60-02	3" X 4" X 71" WOOD INT'R SLAT
5	28	1-13-016	3/8" X 2" SS BTN SKT HD LAG SCR
6	28	1-22-024	3/8" SS FLAT WASHER

**KITS PROVIDED FOR S-2**

ITEM	QTY	PART NO	DESCRIPTION
7	3	K-ANCO860-4	1/2" X 3 3/4" SS ANCHOR KIT (4PC)
8	1	K-BLO632-30	3/8" LAG HARDWARE KIT (30PC)

① ATTACH SLATS TO SUPPORTS.



**ASSEMBLY INSTRUCTIONS**

DATE DRAWN : 3/22/94  
 DRAWN BY : AH  
 DATE REV. : 11/09/11  
 REV. BY : RDH

REV. F

DRAWING NUMBER

75 SERIES

SHEET 2 OF 2