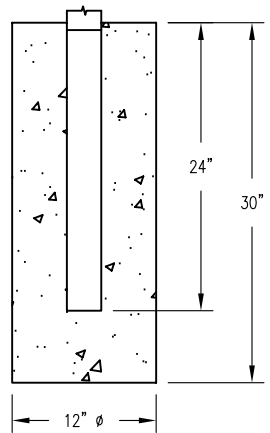
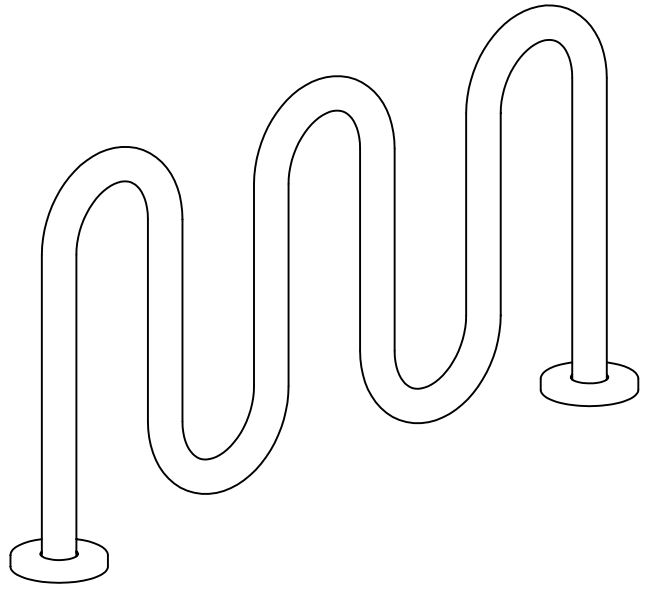


\*  S-2 SURFACE MOUNT \*  
(SEE NOTES)



S-1 EMBEDMENT

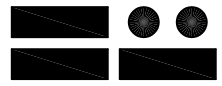


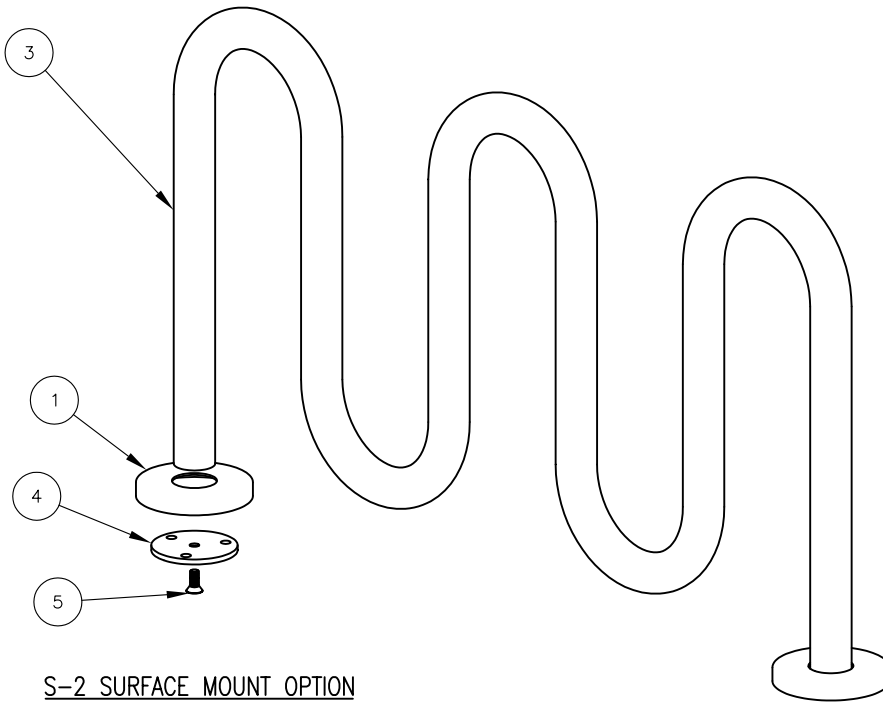
FINISH OPTIONS

- HOT DIPPED GALVANIZED ( VISIBLE VENT HOLES )
- COATED W/ ZINC RICH EPOXY THEN FINISHED W/ POLYESTER POWDER COATING.

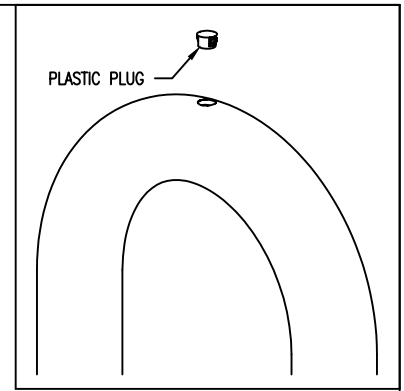
NOTES:

- 1.) 1/2" X 3 3/4" EXPANSION ANCHOR BOLTS PROVIDED FOR OPTION S-2.
  - 2.) PLUGS PROVIDED FOR VISIBLE VENT HOLES. ( HOT DIPPED GALV. ONLY )
- \* UPCHARGE APPLIES TO SUPPORT OPTION - CONSULT YOUR LOCAL REPRESENTATIVE.

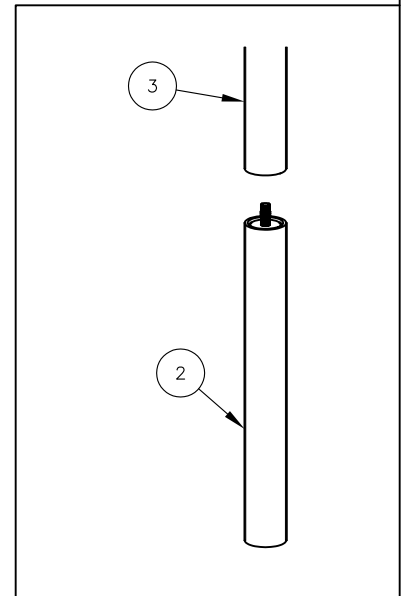
 <b>DuMor, inc.</b> P.O. Box 142 Mifflintown, PA 17059-0142	SCALE :	NONE	TITLE :		BIKE RACK	
	DATE DRAWN :	2/12/99	DRAWN BY :	CDC	REV.	DRAWING NUMBER
	DATE REV. :	02/24/12	REV.	F	125-30	SHEET
	REV. BY :	ESS				1 OF 2



S-2 SURFACE MOUNT OPTION



HOT-DIPPED GALV. BIKE RACK ONLY



S-1 EMBEDMENT OPTION

INSTALLATION FOR SURFACE MOUNT

STEP 1:

- USE 1 - PC. BIKE LOOP, SURFACE MOUNT ( 3 )
  - 2 - PCS. 3/8" THK SURFACE MOUNT PLATE ( 4 )
  - 2 - PCS. 10 GA X 8" DIA ANCHOR PLATE COVER ( 1 )
  - 2 - PCS. 5/8" X 1 1/2" SS FLT SKT HD CAP SCREW ( 5 )
- SLIDE 10 GA X 8" DIA ANCHOR COVER ( 1 ) OVER BIKE LOOP, SURFACE MOUNT ( 3 ) LEGS. ATTACH 3/8" THK. SURFACE MOUNT PLATE ( 4 ) TO BIKE LOOP, SURFACE MOUNT ( 3 ) USING HARDWARE ( 5 ).

STEP 2:

ANCHOR ACCORDINGLY.

( S-2 OPTION )

INSTALLATION FOR PLASTIC PLUG HOT-DIPPED GALV ONLY

( S-1 OPTION )

INSERT PLASTIC PLUG INTO HOLE ON TOP OF EACH LOOP

( S-2 OPTION )

( S-2 OPTION )

ITEM	QTY	PART NO	DESCRIPTION
1	2	0-125-04	10 GA X 8" DIA STL COVER W/ 3 1/8" DIA HOLE
2	2	0-125-09/S-1	EMBEDMENT EXTENSION
3	1	0-125-30/S-2	3-PEAK LOOP BIKE RACK
4	2	0-83-00-03	3/8" THK SURFACE MOUNT PLATE
5	2	1-12-102	5/8" X 1 1/2" SS FLT SKT HD CAP SCR

**DuMor, inc.**  
P.O. Box 142 Mifflintown, PA 17059-0142

SCALE : NONE  
DATE DRAWN : 2/12/99  
DRAWN BY : CDC  
DATE REV. : 02/24/12  
REV. BY : ESS

TITLE : BIKE RACK ASSEMBLY

REV. E	DRAWING NUMBER 125-30	SHEET 2 OF 2
--------	-----------------------	--------------