

SLAT OPTIONS  
 WOOD  
 RECYCLED PLASTIC  
 WOOD GRAIN RECYCLED PLASTIC

NOTES:  
 1.) ALL STL. MEMBERS COATED W/ ZINC RICH EPOXY THEN FINISHED W/ POLYESTER POWDER COATING.  
 2.) 1/2" X 3 3/4" ANCHOR BOLTS PROVIDED.



TABLE

DATE DRAWN : 06/10/24  
 DRAWN BY : RDH  
 DATE REV. : 00/00/00  
 REV. BY : XXX

REV.  
 A

DRAWING NUMBER  
 537-41

SHEET  
 1 OF 2

**NOTES:**

- 1.) DURING ASSEMBLY PROCEDURE; DO NOT COMPLETELY TIGHTEN HARDWARE.
- 2.) THE ACTUAL PARTS WILL NOT BE NUMBERED. NUMBERS ONLY APPLY TO DRAWING.
- 3.) UPON COMPLETION OF ASSEMBLY SQUARE ALL COMPONENTS THEN TIGHTEN ALL HARDWARE.
- 4.) MOUNT AND ANCHOR AS SPECIFIED.

**TOOLS REQ'D**

- 3/4" WRENCH
- 1/4" ALLEN WRENCH
- 1/2" MASONRY DRILL BIT
- DRILL

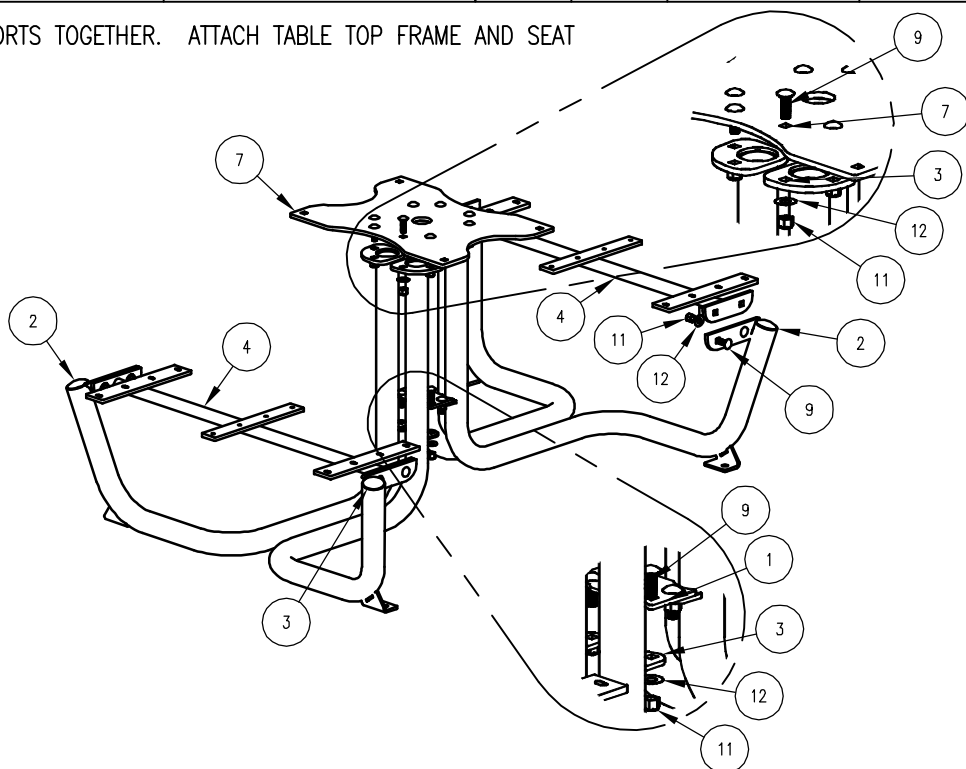
**PARTS LIST**

ITEM	QTY	PART NO	DESCRIPTION
1	1	0-537-00-04	CENTER CONNECTING PLATE
2	2	0-537-40-01L	4' TABLE SUPPORT FRAME, LEFT
3	2	0-537-40-01R	4' TABLE SUPPORT FRAME, RIGHT
4	2	0-537-40-03	4' SEAT BRACE
5	4	0-537-40-05	2" X 4" X 47" INTR SLAT
6	4	0-537-40-06	2" X 4" X 47" EDGE SLAT
7	1	0-537-41-01	TABLE TOP FRAME
8	1	0-537-41-02	4' STL TABLE TOP
9	24	1-11-042	1/2" X 1 1/2" SS CGE BOLT
10	24	1-13-023	5/16" X 1 1/4" SS BTN SKT HD LAG
11	24	1-20-015	1/2" SS NYLON LOCKNUT
12	24	1-22-015	1/2" SS FLAT WASHER
13	24	1-22-017	5/16" SS FLAT WASHER

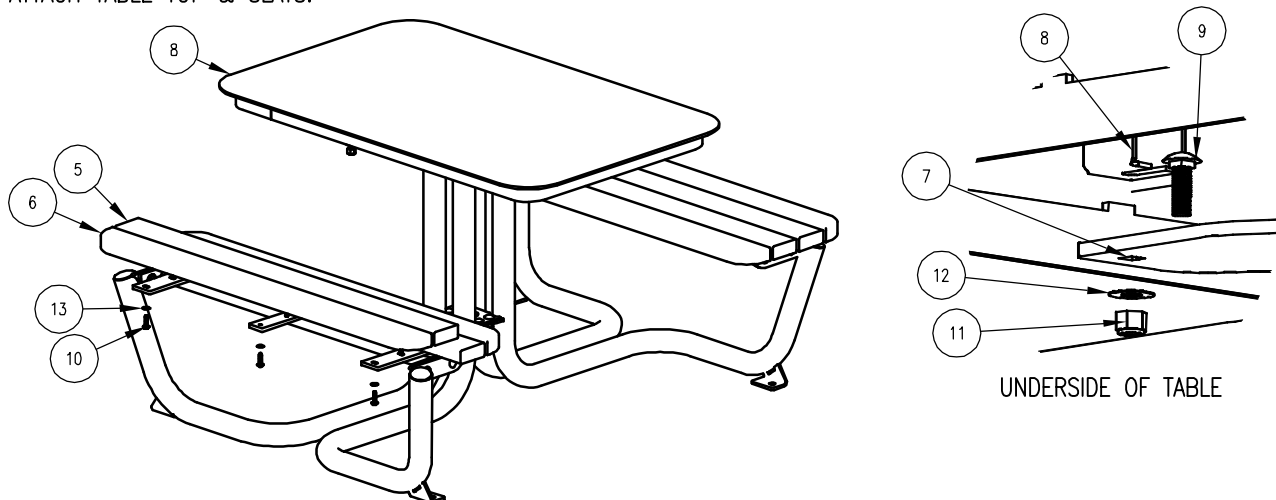
**KITS PROVIDED**

ITEM	QTY	PART NO	DESCRIPTION
14	1	K-ANC0860-4	1/2" X 3 3/4" SS ANCHOR KIT (4PC)
15	1	K-BL0524-24	5/16" LAG HARDWARE KIT (24PC)
16	6	K-CG0824-4L	1/2" CGE BOLT HARDWARE KIT (4)

**1** ATTACH SUPPORTS TOGETHER. ATTACH TABLE TOP FRAME AND SEAT BRACES.



**2** ATTACH TABLE TOP & SLATS.



**ASSEMBLY INSTRUCTIONS**

DATE DRAWN : 11/01/24  
 DRAWN BY : ESS  
 DATE REV. : 00/00/00  
 REV. BY : XXX

REV. A

DRAWING NUMBER

537-41

SHEET 2 OF 2