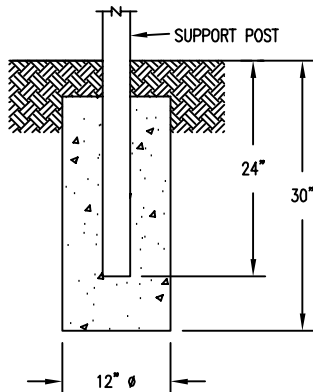
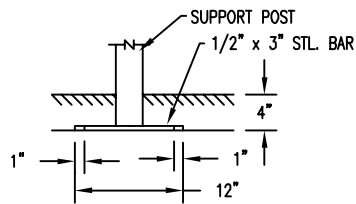


S-2 SURFACE MOUNT



S-1 EMBEDMENT



S-4 SUB FLOOR

SLAT OPTIONS

- WOOD
- RECYCLED PLASTIC
- WOOD GRAIN RECYCLED PLASTIC

NOTES:

- 1.) ALL STL. MEMBERS COATED W/ ZINC RICH EPOXY THEN FINISHED W/ POLYESTER POWDER COATING.
- 2.) 1/2" X 3 3/4" EXPANSION ANCHOR BOLTS PROVIDED S-2 & S-4 OPTIONS.



BENCH

DATE DRAWN : 1/14/25
 DRAWN BY : JSB
 DATE REV. :
 REV. BY :

REV.
A

DRAWING
NUMBER

535P-60

SHEET
1 OF 2

NOTES:

- 1.) DURING ASSEMBLY PROCEDURE;
DO NOT COMPLETELY TIGHTEN HARDWARE.
- 2.) THE ACTUAL PARTS WILL NOT BE NUMBERED.
NUMBERS ONLY APPLY TO DRAWING.
- 3.) UPON COMPLETION OF ASSEMBLY SQUARE
ALL COMPONENTS THEN TIGHTEN ALL HARDWARE.
- 4.) MOUNT AND ANCHOR AS SPECIFIED.

TOOLS REQ'D

- 3/4" WRENCH
- 1/4" ALLEN WRENCH
- 1/2" MASONRY DRILL BIT
- DRILL

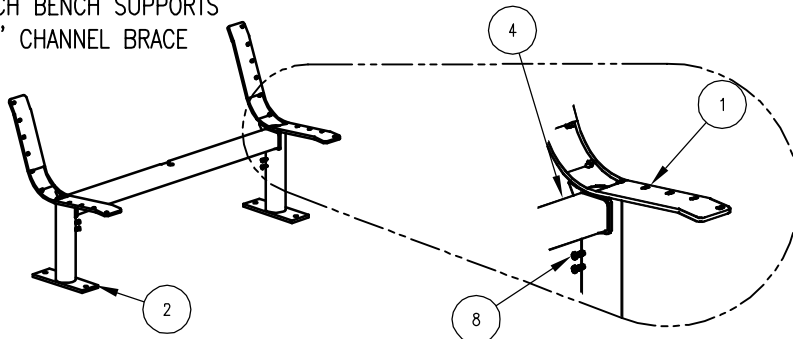
PARTS LIST FOR S-2

| ITEM | QTY | PART NO | DESCRIPTION |
|------|-----|----------------|-------------------------------------|
| 1 | 1 | 0-535-00-01L/2 | LEFT PEDESTAL SUPPORT, SURFACE MT. |
| 2 | 1 | 0-535-00-01R/2 | RIGHT PEDESTAL SUPPORT, SURFACE MT. |
| 3 | 1 | 0-535-00-02 | 3/8" X 3" CENTER CONTOUR STRAP |
| 4 | 1 | 0-535-6-03 | 6' CHANNEL BRACE |
| 5 | 9 | 0-535-60-04 | 2" X 3" X 71" INT'R SLAT |
| 6 | 2 | 0-535-60-05 | 2" X 4" X 71" EDGE SLAT |
| 7 | 1 | 1-11-028 | 3/8" X 1" SS CGE BOLT |
| 8 | 4 | 1-12-097 | 3/8" X 1" SS BTN SKT HD CAP SCR |
| 9 | 33 | 1-13-023 | 5/16" X 1 1/4" SS BTN SKT HD LAG |
| 10 | 1 | 1-20-019 | 3/8" SS THIN NYLON LOCKNUT |
| 11 | 33 | 1-22-017 | 5/16" SS FLAT WASHER |
| 12 | 1 | 1-22-024 | 3/8" SS FLAT WASHER |

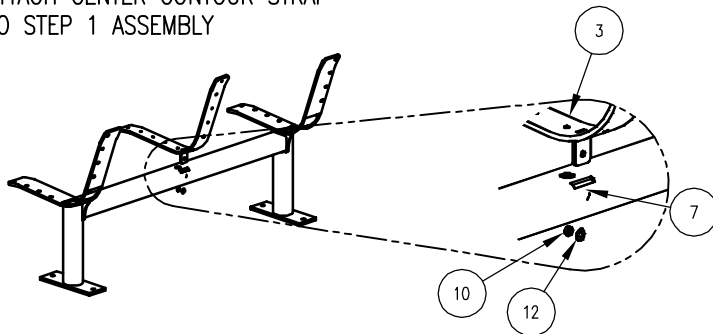
KITS PROVIDED FOR S-2

| ITEM | QTY | PART NO | DESCRIPTION |
|------|-----|--------------|-----------------------------------|
| 13 | 1 | K-ANC0860-4 | 1/2" X 3 3/4" SS ANCHOR KIT (4PC) |
| 14 | 1 | K-BC0616-4 | 3/8" CAP SCR HARDWARE KIT (4 PC) |
| 15 | 1 | K-BL0524-33 | 5/16" LAG HARDWARE KIT (33PC) |
| 16 | 1 | K-CG0616-2TL | 3/8" CGE BOLT HARDWARE KIT (2PC) |

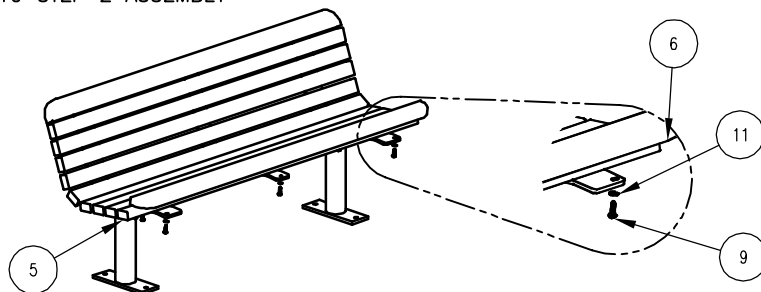
1 ATTACH BENCH SUPPORTS TO 6' CHANNEL BRACE



2 ATTACH CENTER CONTOUR STRAP TO STEP 1 ASSEMBLY



3 ATTACH SLATS TO STEP 2 ASSEMBLY



ASSEMBLY INSTRUCTIONS

DATE DRAWN : 1/14/25
 DRAWN BY : JSB
 DATE REV. : 00/00/00
 REV. BY : XXX

REV. A

DRAWING NUMBER

535P-60

SHEET 2 OF 2